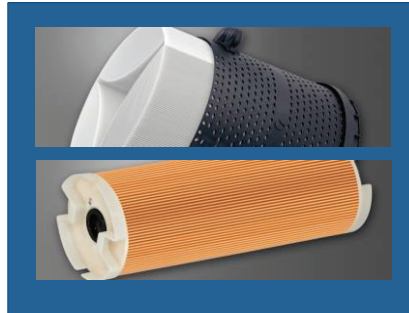


EDM Tech Center Inc.

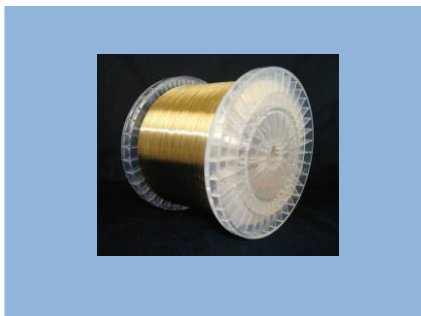
EDM Machinery and Supplies



EDM WIRE

FILTERS

REPLACEMENT PARTS



ROCKLINZER

POWER FEED CONTACTS

DIE GUIDES

BELTS

Bearings

GREASE

Machine Lighting

Sensors

DI RESIN

DIELECTRIC OIL

JOEMARS TR100 TAP REMOVER

NOZZLES

Lubrication

FLYMARKER

BRASS & COPPER ELECTRODE TUBING

TOOLING

Pinch Rollers

CLEANING AGENTS

WWW.EDMTECHCENTER.COM

763-315-9104

WWW.EDMTECHCENTER.COM

PART NUMBER	DESCRIPTION
FANUC	FANUC
FANUC:A04B-0234-C222	Pendant Box for B, C, iA, iB, iC..
FANUC:A04B-0281-K020	Bolt Set Includes iE..
FANUC:A04B-0311-5026#HGP	Grease Gun..
FANUC:A04B-0313-J023#COM	Vertical Wire Alignment Block iA,iB,iC,iD,iE, CiA..
FANUC:A04B-0325-J095#FIN	DI/DO Unit for CiA-400&600 ..
FANUC:A06B-0114-B103	Servo Motor C3 Axis..
FANUC:A06B-6117-H302	Servo Amp Module ..
FANUC:A08B-9310-J830#EN11	PC Fapt Cut USB Type (Full Software Version)..
FANUC:A08B-9610-J611	USB Key, Protector, Controller EDM..
FANUC:A15L-0001-0090	USB Key for PC Fapt Cut Software..(R) Replacement USB PC Fapt Key..
FANUC:A16B-1000-0440	SPG Board..
FANUC:A16B-2100-0180	Digital Interface..
FANUC:A16B-2100-0360	MIF Board..
FANUC:A16B-3300-0030	PCB for LCD # A16B-3300-0050..
FANUC:A20B-2902-0070	Servo Module..
FANUC:A210-0405-X158	(R) Air Filter iB (452mmx632mm)..
FANUC:A250-8003-X414	Mounting Plate..
FANUC:A290-8002-X364	Ceramic Bar..
FANUC:A290-8004-X410	Felt Pad / AWF..
FANUC:A290-8004-X411	Pad Holder..
FANUC:A290-8021-X709	Isolation Plate..
FANUC:A290-8024-V870	Vertical Wire Alignment Block A, B, C & i Series..
FANUC:A290-8092-X702	.004 Upper Die Guide AWF A, B, C & i Machines..
FANUC:A290-8092-X704	.006 Upper Die Guide AWF A, B, C & i Machines..
FANUC:A290-8092-X705	.008 Upper Die Guide AWF A, B, C & i Machines..
FANUC:A290-8092-X706	.010 Upper Die Guide AWF A, B, C & i, CiA Machines..
FANUC:A290-8092-X707	.012 Upper Die Guide AWF A, B, C & i Machines..
FANUC:A290-8092-X712	.004 Lower Die Guide AWF A, B, C & i Machines..
FANUC:A290-8092-X714	.006 Lower Die Guide AWF A, B, C & i Machines..
FANUC:A290-8092-X715	.008 Lower Die Guide AWF A & B Machines..
FANUC:A290-8092-X716	See Part# A290-8110-X716.....010 Lower Die Guide AWF A & B Machines..
FANUC:A290-8092-X717	.012 Lower Die Guide AWF A & B Machines..
FANUC:A290-8101-X335	Pulley..
FANUC:A290-8101-X351	Lever..
FANUC:A290-8101-X354	Shaft..
FANUC:A290-8101-X371	Brake Shoe Old Style (Solid Wheel)..
FANUC:A290-8101-X393	Wire Guide..
FANUC:A290-8101-X394	Wire Guide for Feed Assembly..
FANUC:A290-8101-X730	.004 Upper Die Guide Non/AWF A, B, C, Machines
FANUC:A290-8101-X732	.006 Upper Die Guide Non/AWF A & B Machines
FANUC:A290-8101-X733	.008 Upper Die Guide Non/AWF A & B Machines
FANUC:A290-8101-X734	.010 Upper Diamond Guide Non/AWF A, B, C, Machines..
FANUC:A290-8101-X735	.012 Upper Die Guide Non/AWF A & B Machines
FANUC:A290-8101-X740	.004 Lower Die Guide Non/AWF A, B, C, Machines
FANUC:A290-8101-X742	.006 Lower Die Guide Non/AWF A, B, C, Machines
FANUC:A290-8101-X743	.008 Lower Die Guide Non/AWF A & B Machines
FANUC:A290-8101-X744	.010 Lower Diamond Guide Non/AWF A & B Machines..See Part# A290-8109-X744
FANUC:A290-8101-X745	.012 Lower Die Guide Non/AWF A & B Machines
FANUC:A290-8101-X750	Electrode Pin A & B..Carbide Power Feed Contact Upper/Lower..Non-Polished - Ground Finish..
FANUC:A290-8101-X753	Ruby Guide/Non-AWF..
FANUC:A290-8101-X755	Nozzle Holder Non/AWF..
FANUC:A290-8101-X756	Non/AWF Lower Nozzle 6.5mm Standard..
FANUC:A290-8101-X761	Guide Base A & B Series..
FANUC:A290-8101-X765	Ceramic Roller..
FANUC:A290-8101-X766	(R) Shaft for Lower Roller..
FANUC:A290-8101-X767	Bearing Cover..
FANUC:A290-8101-X771	Cover..
FANUC:A290-8101-X774	Lower Float Nozzle; 4mm - Non/AWF
FANUC:A290-8101-X775	Upper Nozzle; 4mm - Non/AWF
FANUC:A290-8101-X776	Upper Nozzle 6.5mm Standard..
FANUC:A290-8101-X777	Lower Float Nozzle 12mm, Taper - Non/AWF

PART NUMBER	DESCRIPTION
FANUC	FANUC
FANUC:A290-8101-X778	Upper Nozzle 12mm, Taper - Non/AWF
FANUC:A290-8101-X779	Lower Fixed Nozzle; 6.5mm Standard - Non/AWF
FANUC:A290-8101-X961	Centering Jig for "0" Size A, B, C..
FANUC:A290-8101-Z382	Pinch Roller (New Style) for Fanuc 0A, 0B..
FANUC:A290-8101-Z383	Feed Roller for Fanuc 0A, 0B..
FANUC:A290-8101-Z770	Cover..
FANUC:A290-8102-X216	Flange Manifold..
FANUC:A290-8102-X315	Pipe (Stainless Steel)..
FANUC:A290-8102-X319	Cover C, iA, iB..
FANUC:A290-8102-X388	Block For Wire Detect Door..
FANUC:A290-8102-X615	Ceramic Guide..
FANUC:A290-8102-X616	Cover, Splash iA ..
FANUC:A290-8102-X620	Guide (Std Wire) 0.5..
FANUC:A290-8102-X622	Pipe Head Nozzle..
FANUC:A290-8102-X623	AWF Cover C, 1iC - 12" Machines..
FANUC:A290-8102-X629	Joint..
FANUC:A290-8102-X643	Brake Shaft..
FANUC:A290-8102-X656	(R) Chuck 2 w/Rubber Cover..
FANUC:A290-8102-X657	Wire Cutting Electrode..
FANUC:A290-8102-X658	Rubber Cover for Air Chuck A97L-0201-0485#6D2..
FANUC:A290-8102-X659	Discontinued. See p/n A290-8102-X656
FANUC:A290-8102-X660	Chuck 1A - 1A/AWF..
FANUC:A290-8102-X684	Plate Spring..
FANUC:A290-8102-X721	(R) Block (4 Holes & 5mm Screw)..
FANUC:A290-8102-X722	Upper Die Guide Base..
FANUC:A290-8102-X728	Spring..
FANUC:A290-8102-X738	Slide Plate - Robot Arm..
FANUC:A290-8102-X751	Upper Nozzle 6.5mm Standard..
FANUC:A290-8102-X752	AWF Upper Nozzle 12mm, Taper..
FANUC:A290-8102-X763	Lower AWF Block Spacer 1A, 1B..
FANUC:A290-8102-X764	Pipe Jet Nozzle..
FANUC:A290-8102-X769	Teflon Spacer Sheet Lower Block A, B Series..
FANUC:A290-8102-X771	Lower Nozzle 6.5mm Standard..
FANUC:A290-8102-X772	AWF Lower Nozzle 12mm, Taper..
FANUC:A290-8102-X774	AWF Lower Nozzle 4mm..
FANUC:A290-8102-X775	AWF Upper Nozzle 4mm..
FANUC:A290-8102-X789	Donut Sponge for AWF Machines..
FANUC:A290-8102-X790	Curtain..
FANUC:A290-8102-Y722	Die Guide Base..
FANUC:A290-8102-Y726	Sub Die Guide..
FANUC:A290-8102-Y754	Jet Nozzle (Large Hole 1.8mm)..
FANUC:A290-8102-Y756	(R) Jet Nozzle 1.5mm (Stainless Steel Casing)..
FANUC:A290-8102-Y757	Small Threading Jet Nozzle 0.5mm..For use with .004 or .006 wire...
FANUC:A290-8103-V137#U	Tank Float Switch..
FANUC:A290-8103-X070	Sponge..
FANUC:A290-8103-X075	Spacer..
FANUC:A290-8103-X078	Roller, Seal Plate..
FANUC:A290-8103-X079	Roller, Seal Plate..
FANUC:A290-8103-X080	Roller Pipe..
FANUC:A290-8103-X168	Sponge, Door..
FANUC:A290-8103-X705	.008 Upper 45° Die Guide Non/AWF A, B, C Machines
FANUC:A290-8103-X706	.010 Upper 45° Die Guide Non/AWF A, B, C Machines
FANUC:A290-8103-X715	.008 Lower 45° Die Guide Non/AWF A, B Machines
FANUC:A290-8103-X716	.010 Lower 45° Die Guide Non/AWF A, B Machines
FANUC:A290-8103-Y316	Pipe for 0B w/AWF..
FANUC:A290-8104-V647#STD	B-Series Clutch Assembly..
FANUC:A290-8104-X025	Alignment Jig (Top Hat)..
FANUC:A290-8104-X026	Jig (Center Ring)
FANUC:A290-8104-X075	Lower Arm Sponge/Non-AWF..
FANUC:A290-8104-X390	Spring..
FANUC:A290-8104-X612	AWF Detect Block (Clear)..

PART NUMBER	DESCRIPTION
FANUC	FANUC
FANUC:A290-8104-X620	Thin Wire Guide (0.3mm)..
FANUC:A290-8104-X632	Wire Guide Block..
FANUC:A290-8104-X633	Detecting Pin..
FANUC:A290-8104-X704	.010 Upper Die Guide 45° AWF A/B/C/i..
FANUC:A290-8104-X705	.008 Upper Die Guide 45° AWF..
FANUC:A290-8104-X706	.010 Upper 45° Taper Die Guide for Roughing AWF A,B,C,i,CI..
FANUC:A290-8104-X741	Cover AWF OB, 1B, Early iA..
FANUC:A290-8104-X762	Die Guide Base..
FANUC:A290-8104-X764	Wire Guide Cover..
FANUC:A290-8104-X765	Guide Base Cover..
FANUC:A290-8104-X774	AWF Lower Nozzle 2mm..
FANUC:A290-8104-X775	AWF Upper Nozzle 2mm..
FANUC:A290-8104-Y398	Spacer 0C, 1C..
FANUC:A290-8104-Y702	.004 Upper Die Guide - High Precision Type..
FANUC:A290-8104-Y704	.006 Upper Die Guide - High Precision Type..
FANUC:A290-8104-Y705	.008 Upper Die Guide - High Precision Type..
FANUC:A290-8104-Y706	.010 Upper Die Guide AWF C & i - High Precision Type..
FANUC:A290-8104-Y707	.012 Upper Die Guide AWF C & i - High Precision Type..
FANUC:A290-8104-Y712	.004 Lower Die Guide - High Precision Type..
FANUC:A290-8104-Y714	.006 Lower Die Guide - High Precision Type..
FANUC:A290-8108-X043	Y Axis Bellows for 1C, 1iC w/Glass Scale..
FANUC:A290-8108-X063	Seal Plate for 1A,1B,1C,1iA..
FANUC:A290-8108-X073	Pre Seal Bellow - Right..
FANUC:A290-8108-X074	Pre Seal Bellow - Left..
FANUC:A290-8108-X765	Lower Cup Cover..
FANUC:A290-8109-V633#STD	Limit Switch Assembly for i & C Series..
FANUC:A290-8109-X065	Seal Plate 0C (Before Sept. 1, 1996)..
FANUC:A290-8109-X071	Pre Seal Bellows 0C, 0iA, 0iB..
FANUC:A290-8109-X316	Pipe for 0C..
FANUC:A290-8109-X556 #P-F	Cover..
FANUC:A290-8109-X621	Pipe..
FANUC:A290-8109-X715	.008 Lower 45° Die Guide Non/AWF C Machines
FANUC:A290-8109-X716	.010 Lower 45° Die Guide Non/AWF C Machines
FANUC:A290-8109-X743	.008 Lower Die Guide Non/AWF C Machines
FANUC:A290-8109-X744	.010 Lower Diamond Guide Non/AWF C Machines..
FANUC:A290-8109-X752	Upper Sub Die Guide Base for Non-AWF Machine..
FANUC:A290-8109-X753	Upper Sub Die Guide for Non-AWF Machines..
FANUC:A290-8109-Y065	(R) 0C, 0iA Seal Plate (After Sept. 1996)..
FANUC:A290-8109-Y316	Lower Pipe for 0C,0iA,0iB, High Speed..
FANUC:A290-8109-Z087	(R) White Teflon (Left) for 0C & 0iA..
FANUC:A290-8109-Z088	(R) White Teflon (Right) for 0C & 0iA..
FANUC:A290-8109-Z089	(R) White Teflon (Upper) for 0C & 0iA..
FANUC:A290-8109-Z090	(R) White Teflon (Lower) for 0C & 0iA..
FANUC:A290-8110-V165#FLTM	Float Switch..
FANUC:A290-8110-V165#FLTU	Float Switch C & i (Drain)..
FANUC:A290-8110-V165#FLTW	Float Switch C-Series..
FANUC:A290-8110-V168#D	(R) Safety Switch..
FANUC:A290-8110-V381#STD	Assembly Consists of..A90L-0001-0468#G - Gear Box. A90L-0001-0468#M - Feed Motor..
FANUC:A290-8110-V384#STD	Discontinued Item...See Part A290-8110-X382..
FANUC:A290-8110-V607#STD	Discontinued Item...See Part A97L-0201-0485#6D2..
FANUC:A290-8110-V647#STD	(R) Clutch Assy. for .002 Machine, C, iA, iB, iC..
FANUC:A290-8110-V727#STD	Cooling Water Cover..
FANUC:A290-8110-V783#STD	Electrode Pin Scale AWF..
FANUC:A290-8110-X095	Centering Jig for V-Pack 1C..
FANUC:A290-8110-X312	Insulator Board..
FANUC:A290-8110-X317	Bushing 0C, 1C, i-Series..
FANUC:A290-8110-X363	Plate 1C..
FANUC:A290-8110-X364	Plate 1C..
FANUC:A290-8110-X373	Shaft for Feed Roller 0C, 1C..
FANUC:A290-8110-X374	Shaft for Pinch Roller 0C, 1C..
FANUC:A290-8110-X375	Spacer for Pinch Roller A, B..

PART NUMBER	DESCRIPTION
FANUC	FANUC
FANUC:A290-8110-X382	Pinch Roller C-Series..
FANUC:A290-8110-X383	Feed Roller C-Series..
FANUC:A290-8110-X384	Bearing Holder..
FANUC:A290-8110-X391	Wire Guide..
FANUC:A290-8110-X393	Wire Guide..
FANUC:A290-8110-X600	Insulator Plate for C & i Series..
FANUC:A290-8110-X608	Roller on Panel M 1C, 0C..
FANUC:A290-8110-X616	Plate..
FANUC:A290-8110-X683	Detect Pin, Right AWF 0C, 1C..
FANUC:A290-8110-X685	Plate AWF 0C, 1C..
FANUC:A290-8110-X690	Pinch Roller for 0C, 1C..
FANUC:A290-8110-X715	.008 Lower Die Guide AWF C & i Machines..
FANUC:A290-8110-X716	.010 Lower Die Guide AWF C & i Machines..
FANUC:A290-8110-X717	.012 Lower Die Guide AWF C & i Machines..
FANUC:A290-8110-X721	Upper Guide Block AWF 0C, 1C, 0i, 1i..
FANUC:A290-8110-X730	Cover..
FANUC:A290-8110-X750	Electrode Pin C & i Series..Carbide Power Feed Contact Upper/Lower..
FANUC:A290-8110-X751	Screw Upper Electrode C & i Series..
FANUC:A290-8110-X752	Screw Lower Electrode C & iA Series..
FANUC:A290-8110-X766	(R) Shaft for Lower Roller..
FANUC:A290-8110-X769	Teflon Spacer Sheet C & i Series..
FANUC:A290-8110-X770	Ceramic Wire Guide for A, B, C Series..
FANUC:A290-8110-X774	Sub Die Guide AWF 0C, 1C..
FANUC:A290-8110-X775	AWF Lower Nozzle 15mm, 16" Z-AWF..
FANUC:A290-8110-X780	Cover C Series..
FANUC:A290-8110-X821	Bellows..
FANUC:A290-8110-Y312	Insulator Board High Speed AWF..
FANUC:A290-8110-Y316	(R) Pipe 1C, 1iA, 1iB, 1iC High Speed..
FANUC:A290-8110-Y393	Feed Wire Guide C Series..
FANUC:A290-8110-Y623	AWF Cover 1C, 1iA, 1iB, iC-16".
FANUC:A290-8110-Y693	Metal Shaft w/Threads..
FANUC:A290-8110-Y694	Plastic Bushing - White..
FANUC:A290-8110-Y715	.008 Lower Die Guide AWF C & i - High Precision Type..
FANUC:A290-8110-Y716	.010 Lower Die Guide AWF C & i - High Precision Type..
FANUC:A290-8110-Y717	.012 Lower Die Guide AWF C & i - High Precision Type..
FANUC:A290-8110-Y723	Nozzle Base AWF C & i Series..
FANUC:A290-8110-Y726	Upper Sub Die Guide AWF 0C, 1C to iB, iC, iD..
FANUC:A290-8110-Y728	Upper Guide Spring..
FANUC:A290-8110-Y761	Guide Base (High Speed AWF)..
FANUC:A290-8110-Y762	Die Guide Base for 0C..
FANUC:A290-8110-Y767	Lower Guide Cover C, iA, iB..
FANUC:A290-8110-Y769	Teflon Sheet High Speed AWF..
FANUC:A290-8110-Y770	Wire Guide High Speed AWF..
FANUC:A290-8110-Y771	Pipe Guide..
FANUC:A290-8110-Y774	Sub Die Guide (Ruby) High Speed AWF..
FANUC:A290-8110-Y775	Sub Die Guide Non/AWF C Series..
FANUC:A290-8110-Y780	Cover High Speed AWF..
FANUC:A290-8110-Y784	Packing High Speed AWF..
FANUC:A290-8110-Z089	White Teflon Seal (Upper/Lower) for 1C & 1iA..
FANUC:A290-8110-Z090	White Teflon Seal (Left/Right) for 1C & 1iA..
FANUC:A290-8110-Z715	.008 Lower 45° Die Guide..
FANUC:A290-8110-Z716	.010 Lower 45° Die Guide..
FANUC:A290-8111-V106#UPG	Upper Ground Cable 0iA, 0iB..
FANUC:A290-8111-V215#D	Resistivity Probe for i-Series..
FANUC:A290-8111-X132	Wire Box Cover A, B, C, 0i..
FANUC:A290-8111-X193	Drain Hose for 0iA, 0iB..
FANUC:A290-8111-X371	Brake Shoe New Style (Spoked Wheel) .002 & 0i, 1i After Change..
FANUC:A290-8111-X520	Z Axis Bellows for 0iA..
FANUC:A290-8111-X633	Detect Pin .002 Machine..
FANUC:A290-8111-Y526	Insulator Block 0iB, 0iC..
FANUC:A290-8112-V165#FLTW	Float Switch Upper Guide i-Machine..

PART NUMBER	DESCRIPTION
FANUC	FANUC
FANUC:A290-8112-V387#COM	Pneumatic Cylinder..
FANUC:A290-8112-V397#CV	Cylinder Valve Assembly..
FANUC:A290-8112-X131	Wire Collection Box 0iA & 1iA..
FANUC:A290-8112-X351	Scale i-Series..
FANUC:A290-8112-X361	Flange..
FANUC:A290-8112-X373	Feed Shaft iA, iB, iC, iD..Shaft for 0PIC High Precision Machine..
FANUC:A290-8112-X374	Spacer..
FANUC:A290-8112-X378	Pinch Roller Shaft..
FANUC:A290-8112-X382	Pinch Roller i-Series..
FANUC:A290-8112-X383	Feed Roller i-Series..
FANUC:A290-8112-X384	Holder..
FANUC:A290-8112-X390	Block..
FANUC:A290-8112-X391	Wire Guide..
FANUC:A290-8112-X393	Feed Wire Guide i-Series..
FANUC:A290-8112-X394	Wire Guide..
FANUC:A290-8112-X398	Insulating Cover..
FANUC:A290-8112-X615	Ceramic Guide..
FANUC:A290-8112-X656	Chuck 2 w/Rubber for i-Series Made After Dec 1999..
FANUC:A290-8112-X657	Chuck 2 w/ No Rubber..
FANUC:A290-8112-X729	Cover..
FANUC:A290-8112-X751	Upper Nozzle for .002 Machine
FANUC:A290-8112-X752	(R) Lower Electrode Pin Screw for i-Series..
FANUC:A290-8112-Y702	.002 Upper Die Guide AWF C & i Machines..
FANUC:A290-8112-Y703	.003 Upper Die Guide AWF C & i, iD2, iE Machines..
FANUC:A290-8112-Y712	.002 Lower Die Guide AWF C & i Machines..
FANUC:A290-8112-Y713	.003 Lower Die Guide AWF C & i Machines..
FANUC:A290-8112-Y758	Jet Nozzle 6.0mm..
FANUC:A290-8112-Y759	Nozzle 8mm .310"
FANUC:A290-8112-Z071	Brush for Seal 1A, 1B, 1C, 1i..
FANUC:A290-8112-Z776	Flushing Nozzle 20mm Special High Taper i-Machine..
FANUC:A290-8113-X066	Whisk for 0iB..
FANUC:A290-8114-V647#COM	(R) Clutch for C & i Series..(One Way Clutch)..
FANUC:A290-8114-X061	Seal Flange, 1iB..
FANUC:A290-8114-X073	Bellows for Pre-Seal 1iB, 1iC..
FANUC:A290-8114-X075	Bellows Cover, 1iB..
FANUC:A290-8114-X616	Pipe Cover iB, iC, iD..
FANUC:A290-8114-X741	AWF Cover iB..
FANUC:A290-8114-X742	Pick Up Box Brush..
FANUC:A290-8114-Y702	.002 Upper Die Guide - High Precision Type for iMED2, iD2 & iE Machines..
FANUC:A290-8114-Y703	.003 Upper Die Guide - High Precision Type for iMED2, iD2 & iE Machines..
FANUC:A290-8114-Z725	.008 Upper Die Guide 30° Taper AWF C & i Machines..
FANUC:A290-8114-Z726	.010 Upper Die Guide 30° Taper AWF C & i Machines..
FANUC:A290-8115-V106#UPG	Upper Ground Cable..
FANUC:A290-8115-V242#M4	Cylinder Valve (iC, 0iD)..
FANUC:A290-8115-Y526	Insulating Plate (Early iC)..
FANUC:A290-8115-Y546	Insulator Block 0iC Split (Later Model iC)..
FANUC:A290-8115-Z063	Arm Bellows 0iC (Inside) EDM..
FANUC:A290-8115-Z089	Sponge Horizontal 0iD, 0iE (Short)..
FANUC:A290-8116-X726	Sub Die Guide (Ruby) iC, iD, iE..
FANUC:A290-8116-Y546	Insulator Block for 1iC Split Head..
FANUC:A290-8116-Y756	Slide Pin..
FANUC:A290-8116-Y757	Pin Holder..
FANUC:A290-8116-Z060	Arm Bellows Inside 1iC..
FANUC:A290-8116-Z061	Outside Arm Bellows..
FANUC:A290-8117-V067#COM	Seal Block Assy 0iD..
FANUC:A290-8117-V068#COM	Seal Plate Assy 0iD..
FANUC:A290-8117-Z088	Sponge Horizontal 0iD (Long)..
FANUC:A290-8119-T131#WB0	Wire Box Assy. for 0iD2 and 0iE..
FANUC:A290-8119-V102#0LW	Discharge Cable 1125mm (Lower Guide Terminal) for 0iD, 0iE AWF Set of 4 ..
FANUC:A290-8119-V103#0UP	Ground Cable Upper Guide - Rear Tank for 0iD,0iE..
FANUC:A290-8119-V384#STD	Joint..

PART NUMBER	DESCRIPTION
FANUC	FANUC
FANUC:A290-8119-V706#A	Switch Assembly iE..
FANUC:A290-8119-X057	Pre-Seal Bellows 0iD,0iE (Right)..
FANUC:A290-8119-X095	Lower Arm Bellows 0iD2, 0iE..
FANUC:A290-8119-X139	Wire Box Cover 0iD,0iE,C400..
FANUC:A290-8119-X319	Lower Wire Pipe 0iD, 0iE..
FANUC:A290-8119-X362	Flange..
FANUC:A290-8119-X373	Shaft iD..
FANUC:A290-8119-X382	Pinch Roller iD, iE, CiA 400/600 Series..
FANUC:A290-8119-X383	Feed Roller iD, iE, CiA 400/600 Series..
FANUC:A290-8119-X390	Block Feed Assy iD, iE, CiA..
FANUC:A290-8119-X393	Wire Guide iD2, and iE..
FANUC:A290-8119-X394	Ceramic Guide iD2..
FANUC:A290-8119-X398	Insulating Cover for iD, iE..
FANUC:A290-8119-X520	Z-Axis Bellows 0iD/ 0iE..
FANUC:A290-8119-X618	Brake Shoe iD, iE, CiA..
FANUC:A290-8119-X625	Detect Roller iD, iE..
FANUC:A290-8119-X626	Standard Roller iD, iE..
FANUC:A290-8119-X628	Wire Guide iD, iE..
FANUC:A290-8119-X633	Detect Pin iD, iE..
FANUC:A290-8119-X639	Tension Roller Wire Guide..
FANUC:A290-8119-X685	Detect Block iD..
FANUC:A290-8119-X691	Chuck 1 - iD, iE, CiA..
FANUC:A290-8119-X693	Chuck Unit (Cutting) Electrode iD, iD2, iE, CiA..
FANUC:A290-8119-X739	Slide Screw..
FANUC:A290-8119-X766	Ceramic Roller iD, iE..
FANUC:A290-8119-X767	Shaft iD, iE Lower Guide..
FANUC:A290-8119-X776	Lower Guide Roller Cover..
FANUC:A290-8119-X778	Spacer..
FANUC:A290-8119-Y701	.002 Lower Guide - High Precision Type for iMED2, iD2 & iE Machines..
FANUC:A290-8119-Y702	.003 Lower Guide - High Precision Type for iMED2, iD2 & iE Machines..
FANUC:A290-8119-Y703	.004 Lower Guide - High Precision Type for iMED2, iD2 & iE Machines..
FANUC:A290-8119-Y704	.006 Lower Die Guide - High Precision Type for iMED2, iD2 & iE..
FANUC:A290-8119-Y705	.008 Lower Die Guide - High Precision Type for iMED2, iD2 & iE..
FANUC:A290-8119-Y706	.010 Lower Die Guide - High Precision Type for iMED2, iD2 & iE..
FANUC:A290-8119-Y707	.012 Lower Guide - High Precision Type for iMED2, iD2 & iE Machines..
FANUC:A290-8119-Y711	.002 Lower Die Guide for i-MED2, iD2, and iE Machines..
FANUC:A290-8119-Y712	.003 Lower Die Guide for i-MED2, iD2, and iE Machines..
FANUC:A290-8119-Y713	.004 Lower Die Guide for i-MED2, iD2, and iE..
FANUC:A290-8119-Y714	.006 Lower Die Guide for i-MED2, iD2, and iE..
FANUC:A290-8119-Y715	.008 Lower Die Guide for i-MED2, iD2, and iE..
FANUC:A290-8119-Y716	.010 Lower Die Guide for i-MED2, iD2, and iE..
FANUC:A290-8119-Y717	.012 Lower Die Guide for i-MED2, iD2, and iE..
FANUC:A290-8119-Y735	.008 Lower Die Guide 30° Taper iD2, iE, CiA..
FANUC:A290-8119-Y736	.010 Lower Die Guide 30° Taper iD2, iE, CiA..
FANUC:A290-8119-Z735	.004 45° Lower Die Guide for iMED2, iD2 & iE Machines..
FANUC:A290-8119-Z736	.006 45° Lower Die Guide for iMED2, iD2 & iE Machines..
FANUC:A290-8119-Z737	.008 45° Lower Die Guide for iMED2, iD2 & iE Machines..
FANUC:A290-8119-Z738	.010 Lower 45° Taper Die Guide for Roughing iD2, iE, CiA..
FANUC:A290-8119-Z761	Guide Base iD2, and iE..
FANUC:A290-8119-Z763	Lower Die Guide Base (0iD)
FANUC:A290-8119-Z780	Electrode Pin iD2, iE, CiA. Carbide Power Feed Contact Lower..
FANUC:A290-8119-Z781	Electrode Pin Holder 0iE..
FANUC:A290-8119-Z784	Insulating Shaft..
FANUC:A290-8119-Z786	Lower Nozzle 4mm iD2, iE..
FANUC:A290-8119-Z787	Lower Nozzle Standard 6.5mm iD2, iE..
FANUC:A290-8119-Z788	Lower Nozzle 12mm, Taper iD2, iE..
FANUC:A290-8119-Z791	Lower Nozzle 2mm (iD2, iE)..
FANUC:A290-8120-X057	Pre-Seal Bellows 1iD, 1iE - Right..
FANUC:A290-8120-X058	Pre-Seal Bellows 1iD, 1iE - Left..
FANUC:A290-8120-X092	Arm Bellows (1iD)
FANUC:A290-8120-X139	Wire Box Cover 1iD, 1iE..

PART NUMBER	DESCRIPTION
FANUC	FANUC
FANUC:A290-8120-X319	Wire Pipe 1iD, 1iE..
FANUC:A290-8120-Y057	Pre-Seal Bellow (1iD)
FANUC:A290-8120-Z763	Lower Die Guide Base (1iD)
FANUC:A290-8120-Z764	Sub Guide Block 1iE (Green Glass)..
FANUC:A290-8121-X726	Diamond Sub Die Guide (iD Thin Wire)..
FANUC:A290-8123-X057	Pre-Seal Bellow (R), Right Side, CiA..
FANUC:A290-8123-X058	Pre-Seal Bellow (L), Left Side, CiA..
FANUC:A290-8123-X390	Block, Door 0iE..
FANUC:A290-8123-Z771	Resin Block Holder iE..
FANUC:A45L-0001-0329	Ferrite Core..
FANUC:A55L-0001-0024#C5G3	Micro Switch..
FANUC:A55L-0001-0161#TFB11	OFF Switch for 0C..Special Order Item - 1~2 Week Delivery..
FANUC:A55L-0001-0161#TFB22	OFF Switch for 0iA..Special Order Item - 3~4 Month Delivery..
FANUC:A55L-0001-0161#TFW11	ON Switch for 0C..Special Order Item - 1~2 Week Delivery..
FANUC:A55L-0001-0161#TLW113	ON Switch for 0iA..Special Order Item - 3~4 Month Delivery..
FANUC:A55L-0001-0266#40-N	ESP Switch..Replaces p/n A55L-0001-0266#40..
FANUC:A57L-0001-0056-#R4J6S-20	Switch..
FANUC:A58L-0001-0330#A2A	Magnetic Contactor KM1 for 0C, 1C..
FANUC:A6-BA-3X20SUS	Bolt..
FANUC:A6-BA-3X6SUS	Screw..
FANUC:A6-BA-4X25SUS	Bolt Hex for Water Level Assy...
FANUC:A6-BA-4X30SUS	Bolt..
FANUC:A6-BA-4X8SUS	Bolt..
FANUC:A6-CJR-12SUS	C Ring for Feed Roller 0C, 1C..
FANUC:A6-ER-15SUS	E Ring for Feed Roller 0C, 1C..
FANUC:A6-N1-6SUS	6mm Nut..
FANUC:A6-N1-8SUS	8mm Nut..
FANUC:A6-SAKT-5X12SUS	Screw..
FANUC:A6-SAKT-5X20SUS	Lower Electrode Pin Screw..
FANUC:A6-SBD-3X8SUS	Screw..
FANUC:A6-SBD-4X50SUS	Screw..
FANUC:A6-SKKT-3X6SUS	Screw
FANUC:A6-SNA-2X6SUS	Set Screw..
FANUC:A6-SW2NA-4X10S	Screw..
FANUC:A60L-0001-0046/0.5	Fuse 0.5 Amp MP05..
FANUC:A60L-0001-0046/5.0	Fuse 5.0 Amp MP50..
FANUC:A60L-0001-0075/5.0	Fuse 5.0 Amp..
FANUC:A60L-0001-0290/LM03	Fuse 0.3 Amp..
FANUC:A61L-0001-0138#BL	Back Light B Series..
FANUC:A61L-0001-0168#BL	Back Light (Lamp) for 10.4" LCD Screen C & i Series..
FANUC:A63L-0001-0134#15-J	Connector End for Indexer Interface
FANUC:A63L-0001-0456#BSMT	Terminal for Switch Unit (2 Each are needed)..
FANUC:A660-4003-T507	Pendant Cable 0C, 1C..
FANUC:A660-4042-T023	Pendant Cable iA, iB, iC..
FANUC:A660-8009-T869	Pendant Cable for 1B..
FANUC:A660-8010-T057#STD	Cable (Terminal Leads)..
FANUC:A660-8010-T058#STD	Lower Ground Guide 1B- Table..
FANUC:A660-8010-T059#STD	Upper Ground Guide 1B- Table..
FANUC:A660-8010-T327#STD	Detecting Electrode for 0B..
FANUC:A660-8010-T367#STD	Short Detect (CN1)..
FANUC:A660-8010-T368#STD	Discharge 7, 8 (Upper)..
FANUC:A660-8010-T369#STD	Discharge 1, 2 (Upper)..
FANUC:A660-8010-T370#STD	Discharge 3C, 4 (Upper)..
FANUC:A660-8010-T371#STD	Discharge 5, 6 (Lower)..
FANUC:A660-8010-T372#STD	Discharge 3, 4 (Lower)..
FANUC:A660-8010-T373#STD	Lower Table Ground Cable for 0B, 0A..
FANUC:A660-8010-T374#STD	Upper Table Ground Cable..
FANUC:A660-8010-T802#STD	Ground Cable (Table 1B)..
FANUC:A660-8010-T803#STD	Ground Cable (Table 1B)..
FANUC:A660-8011-T458#1CDD	Float Switch C-Series..
FANUC:A660-8011-T682#LWG	Discharge Cable 1C Lower Guide..Lower Guide - SPG BRD..

PART NUMBER	DESCRIPTION
FANUC	FANUC
FANUC:A660-8011-T682#UPG	Discharge Cable 1C Upper Guide..
FANUC:A660-8011-T684#DET	Ground Cable for Detection 1C..
FANUC:A660-8011-T684#LWG	Lower Ground Cable 1C & 1i..
FANUC:A660-8011-T684#UPG	Upper Ground Cable 1C & 1iA, 1iB, 1iC..
FANUC:A660-8011-T684#UPGZ	Upper Ground Cable 16" Machine..
FANUC:A660-8011-T711#DET	Red Detection Cable..
FANUC:A660-8011-T711#LWG	Lower Ground Cable 0C & 0i..
FANUC:A660-8014-T224#0DET	Lower Detection Cable 0iB, 0iC (RED)..
FANUC:A660-8014-T224#1DET	Lower Wire Detection Cable 1iB, 1iC..
FANUC:A660-8014-T225#0LW	Lower Ground Cable 0iB, 0iC..
FANUC:A660-8014-T225#1LW	Lower Ground Cable 1iB, 1iC, 1iD..
FANUC:A660-8015-T764#L660R0	Red Discharge Cable 715mm (Lower Guide Table) for 0iD, 0iE AWF..
FANUC:A74L-0001-0139#3.7	(R) Fuji Inverter B, C, i Series..Replaced p/n Toshiba A74L-0001-0089/02..
FANUC:A86L-0050-0028#27	Spring for Auto Loader 1C..
FANUC:A90L-0001-0378	Fan Motor..
FANUC:A90L-0001-0385#X	Fan Motor 24V DC..
FANUC:A90L-0001-0404#GA	Feed Gearbox A/B Series..
FANUC:A90L-0001-0404#M	DC Motor A/B Series (Wire Feed Motor)..
FANUC:A90L-0001-0423/105SX	Servo Fan FBA06T24H..
FANUC:A90L-0001-0468#BR	Brush for Feed Motor C & i Series..
FANUC:A90L-0001-0468#M	Feed Motor C & i Series..
FANUC:A90L-0001-0470#4912-A	(R) Seal Kit Ebara Pump..Mechanical Seal Kit for Pump..
FANUC:A90L-0001-0474#ACB0518B	Pump..
FANUC:A90L-0001-0474#ACB0523B	(R) Filter / Ion Pump for 1iA, 1iB, 1iC..
FANUC:A90L-0001-0506#135	CPU Fan..
FANUC:A90L-0001-0510	Fan Motor DC24V w/ Female Connector..
FANUC:A90L-0001-0585#ACA1326F	Grundfos Pump for C Series..
FANUC:A91L-0001-0134	Volt/Amp Meter EDM..
FANUC:A91L-0001-0199#50-173-B	Filter Gauge AWF iE/CiA .002 Series..
FANUC:A91L-0001-0199#50-173-H	Pressure Gauge, 0-2MPA, 1/4NPT, Lower MT..
FANUC:A91L-0001-0229#M	Flow Meter ..
FANUC:A97L-0001-0194#00Z006A	Bearing for Brake Unit iE..
FANUC:A97L-0001-0194#04Z000A	Bearing..
FANUC:A97L-0001-0194#7Z000M	Bearing (Roller Panel)..
FANUC:A97L-0001-0195#00Z006A	Bearing (Long Slide)..
FANUC:A97L-0001-0198#03ATB84	Bearing Set - 0A, 0B Ball Screw..
FANUC:A97L-0001-0670#1650HH	Seal Plate Bearing..
FANUC:A97L-0001-0670#L1060Z	Bearing - No Flange..
FANUC:A97L-0001-0670#L1680HH	Bearing..
FANUC:A97L-0001-0670#LF1280Z	Bearing..
FANUC:A97L-0001-0670#LF1470ZZ	Bearing iD..
FANUC:A97L-0100-0151	Ball Screw X Axis - 0C, 0B, 0A..
FANUC:A97L-0100-0152	Ball Screw Y Axis - 0C, 0B, 0A..
FANUC:A97L-0118-0108#W04-M3	Air Fitting Joint (Requires 2 Ea)..
FANUC:A97L-0200-0651#L-06A-B-J	Water Joint..
FANUC:A97L-0201-0261#1	Hinge..
FANUC:A97L-0201-0262#3	Door Latch..
FANUC:A97L-0201-0311#R-12	Pinch Roller Bearing..
FANUC:A97L-0201-0320#DH10X20	Seal Plate Spring..
FANUC:A97L-0201-0369#6001LLU	Feed Bearing, 0C..
FANUC:A97L-0201-0369#6203LLB	Replaced by P/N A290-8101-Z382..
FANUC:A97L-0201-0369#FL608LLB	Lower Bearing, Flanged..
FANUC:A97L-0201-0387#M4X30SUS	Thumb Screw "B" Series Upper Head..
FANUC:A97L-0201-0387#M5X20SUS	Thumb Screw..
FANUC:A97L-0201-0485#6D2	Air Chuck A, B, C Series..(Replaces p/n A290-8110-V607#STD)..
FANUC:A97L-0201-0490#136	Jet Nozzle (Std AWF)..
FANUC:A97L-0201-0492#20-6X6	Coupling AWF 0C, 1C..
FANUC:A97L-0201-0510	Rotor..
FANUC:A97L-0201-0518#FNS-M3	Joint..
FANUC:A97L-0201-0518#FSS-M3	Joint..
FANUC:A97L-0201-0523#16B	Check Valve..

PART NUMBER	DESCRIPTION
FANUC	FANUC
FANUC:A97L-0201-0566#MAX10	Thumb Screw..
FANUC:A97L-0201-0583#3B-M100	3/8" Mesh Strainer Screen..
FANUC:A97L-0201-0583#4B	Strainer Complete Assembly w/Mesh Screen 1/2"..
FANUC:A97L-0201-0583#4B-M100S	(R) 1/2" Mesh Strainer Screen..
FANUC:A97L-0201-0583#4B-OR	Strainer O-Ring..
FANUC:A97L-0201-0583#6B-M100	3/4" Mesh Strainer Screen..
FANUC:A97L-0201-0583#8B-M100	1" Mesh Strainer Screen..
FANUC:A97L-0201-0589#100-10	Door Cylinder Gas Damper for 1C..
FANUC:A97L-0201-0606#L-6-8-T	Air Joint iE..
FANUC:A97L-0201-0606#L68	Joint..
FANUC:A97L-0201-0606#L6M-5	Joint..
FANUC:A97L-0201-0619#C	Cylinder Valve i & C Series..
FANUC:A97L-0201-0673#6201	Pinch Roller Bearing..
FANUC:A97L-0201-0686#SS6001ZZ	Bearing..
FANUC:A97L-0201-0686#SS6805ZZ	Bearing..
FANUC:A97L-0201-0705-F3000	Air Filter..
FANUC:A97L-0201-0708#FM-M5-04	Speed Controller 0C AWF for Air Cylinder..
FANUC:A97L-0201-0713#10X10	Feed Unit Coupling 1C, 0C..
FANUC:A97L-0201-0718	Handle/Door Latch 1i Size..
FANUC:A97L-0201-0770#A05PS25	Air Solenoid for C-Series..
FANUC:A97L-0201-0770#A05PS25X	Solenoid Valve..
FANUC:A97L-0201-0901#20-6X6	Coupling iA (For Clutch)..
FANUC:A97L-0201-0910#6003	Feed Bearing i-Series ..
FANUC:A97L-0201-0911#6807	Pinch Bearing i Series..
FANUC:A97L-0201-0933#57-38	Cylinder ..(Replaced Item: A97L-0201-0715#57-38)..
FANUC:A97L-0201-0937	Air Chuck i-Series..
FANUC:A97L-0203-0094#P-F-A	CKD Chiller..See p/n MMT-17409
FANUC:A97L-0203-0097#6-AF	Coupler, Quick Disconnect for Fanuc OEM Filters..
FANUC:A97L-0203-0098#100-20	Door Cylinder Gas Damper..
FANUC:A97L-0203-0098#150-20	Door Cylinder Gas Damper 0iE..
FANUC:A97L-0203-0305	Regulator & Gauge/Slide Pin iC, iD, iE..
FANUC:A97L-0203-0424	Seal for Lower Bearings..
FANUC:A97L-0203-0464#FLSM5	Joint..
FANUC:A97L-0203-0507	CKD Air Cylinder (Lower Base) iD/iE..
FANUC:A97L-0203-0617	Daikin Chiller iD/ iE, EDM, Fan..
FANUC:A98L-0001-0347#S10-J	O-Ring for Jet Nozzle C & i Series..
FANUC:A98L-0001-0347#S28-J	O-Ring for Jet Nozzle..
FANUC:A98L-0001-0347#S36	O-Ring..
FANUC:A98L-0001-0347#S9-J	O-Ring..
FANUC:A98L-0001-0465#2	LR3 Grease..
FANUC:A98L-0001-0591	Packing (Requires 2 Ea)..
FANUC:A98L-0001-0820#E	Key Sheet B-Series Operation Panel..
FANUC:A98L-0001-0938#1555	Grip (Female End)..
FANUC:A98L-0001-0938#1573	Grip (Male End)..
FANUC:A98L-0001-0943	Packing, Door - Sold per Inch..Rubber Seal for Work Tank Door..
FANUC:A98L-0001-0972	V Packing Seal "0" Size..
FANUC:A98L-0001-0973	V Packing Seal "1" Size..
FANUC:A98L-0001-0992#E	(R) Pendant Key Sheet AWF B, C, Early iA..
FANUC:A98L-0004-0093#A	Grip Tabs for Filter in NC Cabinet Black Fasteners (Male/Female)..
FANUC:A98L-0004-0149	Battery Case (4 D Cell)..
FANUC:A98L-0004-0667#351-10	Toothed Belt for 1iA..
FANUC:A98L-0004-0667#450X10	Toothed Belt for 0B..
FANUC:A98L-0005-0040#G78A2	Pre-Filter for Chiller & AWF..
FANUC:A98L-0005-0055#B	Key Sheet Operating Panel 0C, 1C..
FANUC:A98L-0005-0353#C200	Grease for Auto Greaser..
FANUC:A98L-0005-0556	(R) Black Adhesive Gasket Sheeting..Please Specify Size Needed..
FANUC:A98L-0031-0012	Sanyo Lithium Battery..
FANUC:DX2-4000G	Tension Meter..
FANUC:FAPTCUT-UPGRADE	Fapcut Upgrade..PC Fapt Cut Newest Version xx..
FANUC:JB-HKYC4-022SUS	Shaft Key..
FANUC:JB-OR1A-G95	O-Ring for 0iD Seal..

PART NUMBER	DESCRIPTION
FANUC	FANUC
FANUC:JB-R1A-P10	O-Ring..
FANUC:JB-R1A-P6	O-Ring..
FANUC:MX15HZ	LCD Monitor Protective Film 15" (iD,iE)..
FANUC:PINPKG1	Electrode Pin Package C & i Series A290-8110-X750 (Polished) Set of 4..
FANUC:SB-22401175-01	Fan Motor..
FANUC:SP290-8102-X774#3.0	Lower Nozzle with 3" Extension..
FANUC:SP290-8102-X775#3.0	Upper Nozzle with 3" Extension..
FANUC:SP290-8119-Z786#3.0	Lower Nozzle with 3" Extension iD2, iE, CiA..
FANUC:SUNNEX 1220	Sunnex Work Light Bulb 20w 12v..
FANUC:MMT-16214	Triple Alarm Light for iE and CiA..
FANUC:MMT-17409	Turmoil Chiller OC-150IL-ATC..
FANUC:MMT-21550	EDM PM Kit, 0iC, before 2005
FANUC:MMT-21552	EDM PM Kit, 0iC, after 2005
FANUC:MMT-21872	EDM PM Kit, 1iB-S/AWF
FANUC:MMT-22925	EDM PM Kit, Alpha 0AS
FANUC:MMT-22926	EDM PM Kit, Alpha 0BS/AWF
FANUC:MMT-22933	EDM PM Kit, Alpha 0CS/AWF
FANUC:MMT-22934	EDM PM Kit, Alpha 0iA/AWF
FANUC:MMT-22937	EDM PM Kit, Alpha 1AS/AWF
FANUC:MMT-22938	EDM PM Kit, Alpha 1CS/AWF
FANUC:MMT-22939	EDM PM Kit, Alpha 1iA/AWF
FANUC:MMT-22941	EDM PM Kit, Alpha 1BS/AWF
FANUC:MMT-23016	EDM PM Kit, Alphas 0iD/AWF
FANUC:MMT-23017	EDM PM Kit, Alpha 1iC/AWF
FANUC:MMT-23018	EDM PM Kit, Alpha 1iD/AWF
FANUC:MMT-23113	EDM PM Kit, Alpha 0iD2/0iE
FANUC:MMT-23114	EDM PM Kit, Alpha 1iD2/1iE
FANUC:MMT-23115	EDM PM Kit, Alpha 0AF
FANUC:MMT-23116	EDM PM Kit, Alpha 0iB/AWF

** Items not listed -- Please contact us for a quote. **

