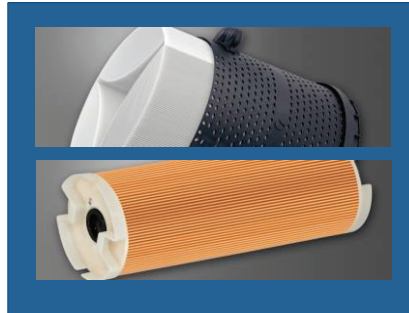


EDM Tech Center Inc.

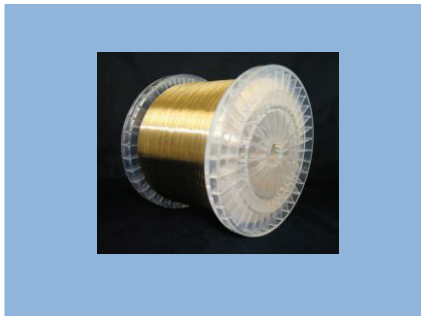
EDM Machinery and Supplies



EDM WIRE

FILTERS

REPLACEMENT PARTS



ROCKLINZER

POWER FEED CONTACTS

DIE GUIDES

BELTS

Bearings

GREASE

Machine Lighting

Sensors

DI RESIN

DIELECTRIC OIL

JOEMARS TR100 TAP REMOVER

NOZZLES

Lubrication

FLYMARKER

BRASS & COPPER ELECTRODE TUBING

TOOLING

Pinch Rollers

CLEANING AGENTS

WWW.EDMTECHCENTER.COM

763-315-9104

WWW.EDMTECHCENTER.COM

PART NUMBER	DESCRIPTION
CURRENT EDM	CURRENT EDM
CEI:020017	Washer 17x24x1.2 Set of 3 for SF30EE Pump..
CEI:025461	Oil Seal S10.5247 Set of 3 for SF30EE Pump..
CEI:044869	Seal Ring Set of 3 for SF30EE Pump..
CEI:1005-020-038	Aluminum Rotary Union..
CEI:1005-560-561	Aluminum Rotary Union..
CEI:103-8575-7041	G-Axis Motor..
CEI:106-4203-21-DC24V	New Part # DTM-2720X1..Z-Axis Servo Motor DC 24V..
CEI:244-2GT	Z-Axis Belt..
CEI:252-M3-9	Z-Axis Belt..
CEI:37688622-ENC	Encoder - Heidenhain..
CEI:6FC52030AD10-R	Control Panel - Refurbished..
CEI:6FC52030AF220AA2	Machine Control Panel..
CEI:6FC52200AA21	2AA0 : PCU50..Includes MCI Board..
CEI:6SN11231AB000HA2	Drive Power Module..
CEI:6SN11451AA010AA1	Servo Drive..
CEI:A7BS-206-1	Thumbwheel Switch..
CEI:AEC Collet Closer	Automatic Collet Closer..
CEI:AEC-DC	AEC Electrode Holder..
CEI:AECDCADTBUSH	AEC Spindle Adaptor Bushing..
CEI:AEC-FC	AEC Finger Cylinder..Actuator for Jaws of AEC..
CEI:AH22SFLG10B3	See new p/n AR22F0M-10B3G
CEI:AMP-AEC	Keyence Amplifier TA340..
CEI:AP1	Extended Alignment Pin..
CEI:AR22F0M-10B3G	Main Power On Switch..
CEI:ATRM-45	Ammeter without Shunt..
CEI:AUX FLUSH KIT	Aux Flushing Kit with Magnetic base..
CEI:B90MXL6.4	Spindle Belt..
CEI:BEARINGS-2	Spindle Bearing Set; 6004..
CEI:BEARINGS-3	Spindle Bearing Set; Unmatched 7004-B..
CEI:BEARINGS-Z	Z-Axis Bearings (Set)..
CEI:BEARINGS-ZS	Z-Axis Screw Bearing..
CEI:BEARING-XSE	X-Axis Ball Screw Bearing..
CEI:BELX-300	X-Axis Way Covers..
CEI:BELZ	Z-Axis Bellow..
CEI:BL2700	Energizing Cable (A) - New Style..Measures 9 Ft..
CEI:BL900	Energizing Cable (A)..Measures 3 Ft..
	** Items not listed -- Please contact us for a quote. **

Current EDM
EDM DRILLING MACHINES

PART NUMBER	DESCRIPTION
CURRENT EDM	CURRENT EDM
CEI:Bullet Guides	
CEI:Bullet Guides:BG-010	.004 .1mm Bullet Guide..
CEI:Bullet Guides:BG-015	.006 .15mm Bullet Guide..
CEI:Bullet Guides:BG-020	.008 .2mm Bullet Guide..
CEI:Bullet Guides:BG-025	.010 .25mm Bullet Guide..
CEI:Bullet Guides:BG-030	.012 .3mm Bullet Guide..
CEI:Bullet Guides:BG-035	.014 .35mm Bullet Guide..
CEI:Bullet Guides:BG-040	.016 .4mm Bullet Guide..
CEI:Bullet Guides:BG-045	.018 .45mm Bullet Guide..
CEI:Bullet Guides:BG-050	.020 .5mm Bullet Guide..
CEI:Bullet Guides:BG-060	.024 .6mm Bullet Guide..
CEI:Bullet Guides:BG-070	.028 .7mm Bullet Guide..
CEI:Bullet Guides:BG-080	.032 .8mm Bullet Guide..
CEI:Bullet Guides:BG-090	.035 .9mm Bullet Guide..
CEI:Bullet Guides:BG-100	.039 1.0mm Bullet Guide..
CEI:Bullet Guides:BG-110	.043 1.1mm Bullet Guide..
CEI:Bullet Guides:BG-120	.047 1.2mm Bullet Guide..
CEI:Bullet Guides:BG-130	.051 1.3mm Bullet Guide..
CEI:Bullet Guides:BG-140	.055 1.4mm Bullet Guide..
CEI:Bullet Guides:BG-150	.059 1.5mm Bullet Guide..
CEI:Bullet Guides:BG-160	.063 1.6mm Bullet Guide..
CEI:Bullet Guides:BG-170	.067 1.7mm Bullet Guide..
CEI:Bullet Guides:BG-180	.071 1.8mm Bullet Guide..
CEI:Bullet Guides:BG-190	.075 1.9mm Bullet Guide..
CEI:Bullet Guides:BG-200	.079 2.0mm Bullet Guide..
CEI:Bullet Guides:BG-210	.083 2.1mm Bullet Guide..
CEI:Bullet Guides:BG-220	.087 2.2mm Bullet Guide..
CEI:Bullet Guides:BG-230	.091 2.3mm Bullet Guide..
CEI:Bullet Guides:BG-240	.095 2.4mm Bullet Guide..
CEI:Bullet Guides:BG-250	.098 2.5mm Bullet Guide..
CEI:Bullet Guides:BG-260	.102 2.6mm Bullet Guide..
CEI:Bullet Guides:BG-270	.106 2.7mm Bullet Guide..
CEI:Bullet Guides:BG-280	.110 2.8mm Bullet Guide..
CEI:Bullet Guides:BG-290	.114 2.9mm Bullet Guide..
CEI:Bullet Guides:BG-300	.118 3.0mm Bullet Guide..
CEI:Bullet Guides:BG-310	.122 3.1mm Bullet Guide..
CEI:Bullet Guides:BG-320	.126 3.2mm Bullet Guide..
CEI:Bullet Guides:BG-340	.134 3.4mm Bullet Guide..
CEI:Bullet Guides:BG-350	.138 3.5mm Bullet Guide..
CEI:Bullet Guides:BG-360	.142 3.6mm Bullet Guide..
CEI:Bullet Guides:BG-380	.150 3.8mm Bullet Guide..
CEI:Bullet Guides:BG-390	.154 3.9mm Bullet Guide..
CEI:Bullet Guides:BG-400	.158 4.0mm Bullet Guide..
CEI:Bullet Guides:BG-410	.161 4.1mm Bullet Guide..
CEI:Bullet Guides:BG-420	.165 4.2mm Bullet Guide..
CEI:Bullet Guides:BG-430	.169 4.3mm Bullet Guide..
CEI:Bullet Guides:BG-450	.177 4.5mm Bullet Guide..
CEI:Bullet Guides:BG-460	.181 4.6mm Bullet Guide..
CEI:Bullet Guides:BG-470	.185 4.7mm Bullet Guide..
CEI:Bullet Guides:BG-500	.197 5.0mm Bullet Guide..
CEI:Bullet Guides:BG-510	.201 5.1mm Bullet Guide..
CEI:Bullet Guides:BG-540	.213 5.4mm Bullet Guide..
CEI:Bullet Guides:BG-550	.217 5.5mm Bullet Guide..
CEI:Bullet Guides:BG-560	.221 5.6mm Bullet Guide..
CEI:Bullet Guides:BG-590	.232 5.9mm Bullet Guide..
CEI:Bullet Guides:BG-600	.236 6.0mm Bullet Guide..
CEI:Bullet Guides:BG-620	.244 6.2mm Bullet Guide..
CEI:Bullet Guides:BG-640	.252 6.4mm Bullet Guide..
CEI:Bullet Guides:BG-650	.256 6.5mm Bullet Guide..



PART NUMBER	DESCRIPTION
CURRENT EDM	CURRENT EDM
CEI:CAPBOX	Capacitor Box..
CEI:CB-124	Energizing Graphite Brush (2)..
CEI:CB-124 A	Energizing Copper Brushes (2)..
CEI:CC050	Collet Type 1 Size 0.30 - 0.50mm..
CEI:CC075	Collet Type 2 Size 0.50 - 0.75mm..
CEI:CC100	Collet Type 3 Size 0.75 - 1.00mm..
CEI:CC125	Collet Type 4 Size 1.00 - 1.25mm..
CEI:CC150	Collet Type 5 Size 1.25 - 1.50mm..
CEI:CC175	Collet Type 6 Size 1.50 - 1.75mm..
CEI:CC200	Collet Type 7 Size 1.75 - 2.00mm..
CEI:CC225	Collet Type 8 Size 2.00 - 2.25mm..
CEI:CC250	Collet Type 9 Size 2.25 - 2.55mm..
CEI:CC275	Collet Type 10 Size 2.55 - 2.80mm..
CEI:CC300	Collet Type 11 Size 2.80 - 3.00mm..
CEI:CP-4-E020-CT	Display PCB for CT300..
CEI:CRH20G10	Resistor..
CEI:CRH20G20	Resistor..
CEI:CRKH	Surge Suppressor w/ Wires..
CEI:CT Guards	Splash Guards..
CEI:CTMEM	Main Controller Membrane for CT300..
CEI:CV	Check Valve for HP Pump AD711..Check Valve Assembly D711-317, Includes O-Ring..
CEI:CV-2	Check Valve for Pumps 2SF30EE..
CEI:D30VT60	Rectifier..
CEI:D30VT60-C	Rectifier w/ Cables..
CEI:D711-301	Pump Manifold..
CEI:DF 146	Filter for old Aquarius System 6/Cs..
CEI:DGH2	Dual Bullet / Sapphire Guide Holder..
CEI:DHOSE-HC	Drain Hose for Oil Machine
CEI:DSEAL	Work Tank Door Seal..
CEI:DTM-2720X1	Z-Axis Servo Motor DC 24V..
CEI:E3T-CD11	Collet in Carousel Sensor..
CEI:E69C04B	Encoder Shaft Coupler..
CEI:E6A2-CW3C100	Rotary Encoder..
CEI:EE-SX870A	G-Axis Optical Limit Switch..
CEI:EE-SX870R	Limit Switch..
CEI:EE-SX872A	Optical Limit Switch..
CEI:ES050	0.004 - 0.020 in. (0.1 - 0.5mm) Electrode Seals - 5/Set..
CEI:ES100	0.024 - 0.039 in. (0.6 - 1.0mm) Electrode Seals - 5/Set..
CEI:ES150	0.043 - 0.059 in. (1.1 - 1.5mm) Electrode Seals - 5/Set..
CEI:ES200	0.063 - 0.079 in. (1.6 - 2.0mm) Electrode Seals - 5/Set..
CEI:ES300	0.083 - 0.138 in. (2.1 - 3.5mm) Electrode Seals - 5/Set..
CEI:ES450	0.142 - 0.217 in. (3.6 - 5.5mm) Electrode Seals - 5/Set..
CEI:ES650	0.221 - 0.256 in. (5.6 - 6.5mm) Electrode Seals - 5/Set..
CEI:ES-AEC	Electrode Sensor for CT300..
CEI:ESPC	Electric Stop Circuit..
CEI:ESTABILIZER	Electrode Stabilizer..
CEI:EST-BAR-F	Electrode Stabilizer Bar w/Funnel..
CEI:EX1-E321	Board..
CEI:EX1-E323	Transistor PC Board..
CEI:FERRULES	Black Plastic Ferrule for (HPOSE) High Pressure Hose..
CEI:FG	Foil Gear..
CEI:FG-1	Foil Gear 1.5 Mod, Pwr G..
CEI:FREOX	Rust Inhibitor 1 Gallon..
CEI:G180	Oil Filter Canister Seal ..(O-Ring for Filter Seal on Submerged Machine)..
CEI:GFG-A-1.5-P	Foil Gear Assembly, 1.5 Mod, Pwr..
CEI:GFG-A-1.5-P1	Foil Gear Assembly, 1.5 Mod, Pwr G., (Flat)..
CEI:GH-AEC	AEC/GC Guide Holder for AEC Machines..



PART NUMBER	DESCRIPTION
CURRENT EDM	CURRENT EDM
CEI:GHB3	Guide Holder Base (2 pc Set)..
CEI:H115-308	Seal Nut O-Ring Set 3-Pcs..
CEI:H115-312	Felt Wiper Set 3-Pcs..
CEI:HC-TH	Door Hinge for HC Tank on Oil Machine..
CEI:HC-TL	Door Latch for Tank on Oil Machine..
CEI:HPELBOW	High Pressure Elbow; Rotary Union Elbow..
CEI:HPHOSE	High Pressure Hose..
CEI:HPP	High Pressure Pump -Only-..
CEI:HPPG-2SF	High Pressure Pump Gauge for 2SF30EE Pump..
CEI:HPPGW	High Pressure Pump Gauge for AD711 Pump Gauge - Water Machine..
CEI:HPPGWMPH	High Pressure Pump Gauge for MPH Pump..
CEI:HPPM	High Pressure Pump Motor..
CEI:HPPREG	High Pressure Pump Regulator for AD711 Pump..
CEI:HPPRV-2SF	High Pressure Pump Regulator Valve for 2SF30EE New Style Pump..
CEI:HPPUMP-2SF	High Pressure Pump..
CEI:IB-4	G10 Insulator Bushings; Set of 4..
CEI:IP	Insulator Plate..
CEI:IS	Insulated Screw for Old Style Machines..
CEI:KC108IIR4	Z-Axis Motor Pulley (MT40)..
CEI:KD004II	Spindle Motor Pulley - SpurGear..
CEI:KDC1	Keyless Drill Chuck 0.005 - 0.0625 in...Albrecht Brand Chuck..
CEI:KDC1-ADPT	Adapter for Keyless Drill Chuck..
CEI:L404011DC24V	DC Spindle Motor..
CEI:L404T011EDC24V	DC Spindle Motor with Tachometer for machines with SRJ3 and up Control..
CEI:LCA505-12	Power Supply..
CEI:LS11R-1A	Float Sensor (Used on the Oil Machines)..
CEI:LUBEKIT	5 Pc Lubricant Set; for Leadscrew Machines..
CEI:LUBEKIT-1	4 Pc Lubricant Set; for Ballscrew Machines..
CEI:MANUAL	Machine Manual
CEI:MT Guards	MT30, MT30S, MT40 & MT40S Splash Guards..
CEI:MU1238A-11B-E	Blower Fan for CT300..
CEI:NCRH150G15RJ	Resistor..
CEI:NRC110-5A-AA	Circuit Breaker Protector..
CEI:OF-1065	Dielectric Oil Filter 6/Cs..
CEI:OR-1BXP20	Check Valve O-Ring (Set 6 Pcs)..
CEI:OS	Oil Seal..
CEI:PBELT	Pump Belt for AD711 Style Pump..
CEI:PG-21	Pump Cable..
CEI:PGGL	CT300 Cable..
CEI:PIN	Centering Pin; Alignment Pin (Non-AEC)..
CEI:PK566-A	Stepping Motor..Replaced Discontinued p/n PH566-A..
CEI:PLSEAL	Seal For Sub-Tank (CT300)..
CEI:PMM-BA-5603-1	G-Axis Driver ; Replaced p/n NSP1-5141..
CEI:PSS	Piston Seal Spring..
CEI:PUDC12B4RS	Fan..
CEI:Remote Controller	Hand Held Pendant for CT300..
CEI:Remote Membrane	Remote Controller Membrane for CT300..
CEI:RING	Copper Energizing Ring..
CEI:RL1270-R	Energizing Cable (B) - Red Ends..P3 Ground Cable (Round)..
CEI:RL300/12	Energizing Cable (C) - Red Ends..
CEI:RL300/18	Energizing Cable (C) - Red Ends..
CEI:RL3048	Energizing Cable (B)..
CEI:RL750/36	Energizing Cable (B) - Red Ends..
CEI:RV16YN-15SB303	Rotation Speed Adjustment Controller..
CEI:S20LC40	Rectifier..
CEI:S-5GL2	Z-Axis Limit Switch..Upper Limit Switch for the Z-Axis..
CEI:S5VB20	Rectifier..

Current EDM
EDM DRILLING MACHINES

PART NUMBER	DESCRIPTION
CURRENT EDM	CURRENT EDM
CEI:Sapphire Guides	
CEI:Sapphire Guides:SG-010	.004 .1mm Sapphire Guide..
CEI:Sapphire Guides:SG-012	.005 .12mm Sapphire Guide..
CEI:Sapphire Guides:SG-015	.006 .15mm Sapphire Guide..
CEI:Sapphire Guides:SG-020	.008 .2mm Sapphire Guide..
CEI:Sapphire Guides:SG-025	.010 .25mm Sapphire Guide..
CEI:Sapphire Guides:SG-030	.012 .3mm Sapphire Guide..
CEI:Sapphire Guides:SG-035	.014 .35mm Sapphire Guide..
CEI:Sapphire Guides:SG-040	.016 .4mm Sapphire Guide..
CEI:Sapphire Guides:SG-040 SP	.016 .4mm Bullet Guide Style Sapphire Guide..
CEI:Sapphire Guides:SG-050	.020 .5mm Sapphire Guide..
CEI:Sapphire Guides:SG-060	.024 .6mm Sapphire Guide..
CEI:Sapphire Guides:SG-070	.028 .7mm Sapphire Guide..
CEI:Sapphire Guides:SG-080	.032 .8mm Sapphire Guide..
CEI:Sapphire Guides:SG-090	.035 .9mm Sapphire Guide..
CEI:Sapphire Guides:SG-100	.039 1.0mm Sapphire Guide..
CEI:Sapphire Guides:SG-110	.043 1.1mm Sapphire Guide..
CEI:Sapphire Guides:SG-120	.047 1.2mm Sapphire Guide..
CEI:Sapphire Guides:SG-130	.051 1.3mm Sapphire Guide..
CEI:Sapphire Guides:SG-150	.059 1.5mm Sapphire Guide..
CEI:Sapphire Guides:SG-200	.079 2.0mm Sapphire Guide..
CEI:Sapphire Guides:SG-230	.091 2.3mm Sapphire Guide..
CEI:Sapphire Guides:SG-250	.098 2.5mm Sapphire Guide..
CEI:Sapphire Guides:SG-300	.118 3.0mm Sapphire Guide..
CEI:SC51AC100V4A1B	Magnetic Relay..
CEI:SDC1	Standard Drill Chuck - Small 0.012 - 0.118 in...Yukiwa Brand Chuck..
CEI:SDC2	Standard Drill Chuck - Large 0.040 - 0.256 in...Jacobs Brand Chuck..
CEI:Sensor	Re-proximity Sensor Switch..
CEI:SH-1-E001	Control PC Board..
CEI:SH-3-E003	Transistor PC Board..
CEI:SP	Seal Piston w/ Black O-Ring..(Machines w/out AEC)..
CEI:SPADAPT-AEC	Spindle Adapter for AEC Machines..
CEI:SPAEC	Seal Piston w/Two Black O-Rings..(Machines w/ AEC)..
CEI:SPINBLOCK	Spindle Block for CT300/MT30 Head..
CEI:SPINDLE	Spindle w/ Energizing Copper Ring for machines with 12" Z-Axis..
CEI:SPINDLE-1	Spindle for newer machines with 16" Z-Axis..
CEI:ST12	Driver for X-Axis Motor..
CEI:SW03/3H	Magnetic Switch..
CEI:TN	Thrust Nut For Spindle - Metric..
CEI:VALVE	3 Way Valve..
CEI:W-AXIS	W-Axis Harness..
CEI:WSK	Water Seal Kit - For AD711 Pumps..(Includes both A & B kits)..
CEI:WSK:Water Seal Kit A	Kit A
CEI:WSK:Water Seal Kit B	Kit B
CEI:WSK-1	Water Seal Kit - For MPH804 Pumps..(Includes both A & B kits)..
CEI:WSK-2	Water Seal Kit - For 2SF30EE / SF30EE Pumps..(Includes both A & B kits)..
CEI:XBSN	X-Axis Ballscrew and Nut..
CEI:YBSN	Y-Axis Ballscrew and Nut..
CEI:YLS-Preharness	Y-Axis Preharness Cable..
CEI:ZBSN-1	Z-Axis Ballscrew & Nut..Replaces Old Style "Leadscrew" Type..
CEI:ZNS	Z-Axis Screw Nut for "Leadscrew" Type..
	** Items not listed -- Please contact us for a quote. **



PART NUMBER	DESCRIPTION
CURRENT EDM	CURRENT EDM
ELECTRODES:Brass:Current:BE-015	.006 .15mm x 8 Brass Electrode [20 Each/Pak].
ELECTRODES:Brass:Current:BE-020	.008 .2mm x 12 Brass Electrode [20 Each/Pak].
ELECTRODES:Brass:Current:BE-025	.010 .25mm x 12 Brass Electrode [20 Each/Pak].
ELECTRODES:Brass:Current:BE-030	.012 .3mm x 16 Brass Electrode [20 Each/Pak].
ELECTRODES:Brass:Current:BE-035	.014 .35mm x 16 Brass Electrode [20 Each/Pak].
ELECTRODES:Brass:Current:BE-038	.015 .38mm x 16 Brass Electrode [20 Each/Pak].
ELECTRODES:Brass:Current:BE-040	.016 .4mm x 16 Brass Electrode [20 Each/Pak].
ELECTRODES:Brass:Current:BE-045	.018 .45mm x 16 Brass Electrode [20 Each/Pak].
ELECTRODES:Brass:Current:BE-050	.020 .5mm x 16 Brass Electrode [20 Each/Pak].
ELECTRODES:Brass:Current:BE-060	.024 .6mm x 16 Brass Electrode [20 Each/Pak].
ELECTRODES:Brass:Current:BE-070	.028 .7mm x 16 Brass Electrode [20 Each/Pak].
ELECTRODES:Brass:Current:BE-080	.032 .8mm x 16 Brass Electrode [20 Each/Pak].
ELECTRODES:Brass:Current:BE-090	.035 .9mm x 16 Brass Electrode [20 Each/Pak].
ELECTRODES:Brass:Current:BE-100	.039 1.0mm x 16 Brass Electrode [20 Each/Pak].
ELECTRODES:Brass:Current:BE-110	.043 1.1mm x 16 Brass Electrode [20 Each/Pak].
ELECTRODES:Brass:Current:BE-120	.047 1.2mm x 16 Brass Electrode [20 Each/Pak].
ELECTRODES:Brass:Current:BE-130	.051 1.3mm x 16 Brass Electrode [20 Each/Pak].
ELECTRODES:Brass:Current:BE-140	.055 1.4mm x 16 Brass Electrode [20 Each/Pak].
ELECTRODES:Brass:Current:BE-150	.059 1.5mm x 16 Brass Electrode [20 Each/Pak].
ELECTRODES:Brass:Current:BE-160	.063 1.6mm x 16 Brass Electrode [20 Each/Pak].
ELECTRODES:Brass:Current:BE-170	.067 1.7mm x 16 Brass Electrode [20 Each/Pak].
ELECTRODES:Brass:Current:BE-180	.071 1.8mm x 16 Brass Electrode [20 Each/Pak].
ELECTRODES:Brass:Current:BE-190	.075 1.9mm x 16 Brass Electrode [20 Each/Pak].
ELECTRODES:Brass:Current:BE-200	.079 2.0mm x 16 Brass Electrode [20 Each/Pak].
ELECTRODES:Brass:Current:BE-210	.083 2.1mm x 16 Brass Electrode [20 Each/Pak].
ELECTRODES:Brass:Current:BE-220	.087 2.2mm x 16 Brass Electrode [20 Each/Pak].
ELECTRODES:Brass:Current:BE-230	.091 2.3mm x 16 Brass Electrode [20 Each/Pak].
ELECTRODES:Brass:Current:BE-240	.095 2.4mm x 16 Brass Electrode [20 Each/Pak].
ELECTRODES:Brass:Current:BE-250	.098 2.5mm x 16 Brass Electrode [20 Each/Pak].
ELECTRODES:Brass:Current:BE-260	.102 2.6mm x 16 Brass Electrode [20 Each/Pak].
ELECTRODES:Brass:Current:BE-270	.106 2.7mm x 16 Brass Electrode [20 Each/Pak].
ELECTRODES:Brass:Current:BE-280	.110 2.8mm x 16 Brass Electrode [20 Each/Pak].
ELECTRODES:Brass:Current:BE-290	.114 2.9mm x 16 Brass Electrode [20 Each/Pak].
ELECTRODES:Brass:Current:BE-300	.118 3.0mm x 16 Brass Electrode [20 Each/Pak].
ELECTRODES:Brass:Current:BE-310	.122 3.1mm x 12 Brass Electrode [10 Each/Pak].
ELECTRODES:Brass:Current:BE-320	.126 3.2mm x 12 Brass Electrode [10 Each/Pak].
ELECTRODES:Brass:Current:BE-340	.134 3.4mm x 12 Brass Electrode [10 Each/Pak].
ELECTRODES:Brass:Current:BE-350	.138 3.5mm x 12 Brass Electrode [10 Each/Pak].
ELECTRODES:Brass:Current:BE-360	.142 3.6mm x 12 Brass Electrode [10 Each/Pak].
ELECTRODES:Brass:Current:BE-380	.150 3.8mm x 12 Brass Electrode [10 Each/Pak].
ELECTRODES:Brass:Current:BE-390	.154 3.9mm x 12 Brass Electrode [10 Each/Pak].
ELECTRODES:Brass:Current:BE-400	.158 4.0mm x 12 Brass Electrode [10 Each/Pak].
ELECTRODES:Brass:Current:BE-410	.161 4.1mm x 12 Brass Electrode [10 Each/Pak].
ELECTRODES:Brass:Current:BE-420	.165 4.2mm x 12 Brass Electrode [10 Each/Pak].
ELECTRODES:Brass:Current:BE-430	.169 4.3mm x 12 Brass Electrode [10 Each/Pak].
ELECTRODES:Brass:Current:BE-450	.177 4.5mm x 12 Brass Electrode [10 Each/Pak].
ELECTRODES:Brass:Current:BE-460	.181 4.6mm x 12 Brass Electrode [10 Each/Pak].
ELECTRODES:Brass:Current:BE-470	.185 4.7mm x 12 Brass Electrode [10 Each/Pak].
ELECTRODES:Brass:Current:BE-480	.189 4.8mm x 12 Brass Electrode [10 Each/Pak].
ELECTRODES:Brass:Current:BE-500	.197 5.0mm x 12 Brass Electrode [10 Each/Pak].
ELECTRODES:Brass:Current:BE-510	.201 5.1mm x 12 Brass Electrode [10 Each/Pak].
ELECTRODES:Brass:Current:BE-540	.213 5.4mm x 12 Brass Electrode [10 Each/Pak].
ELECTRODES:Brass:Current:BE-550	.217 5.5mm x 12 Brass Electrode [10 Each/Pak].
ELECTRODES:Brass:Current:BE-560	.221 5.6mm x 12 Brass Electrode [10 Each/Pak].
ELECTRODES:Brass:Current:BE-590	.232 5.9mm x 12 Brass Electrode [10 Each/Pak].
ELECTRODES:Brass:Current:BE-600	.236 6.0mm x 12 Brass Electrode [10 Each/Pak].
ELECTRODES:Brass:Current:BE-610	.240 6.1mm x 12 Brass Electrode [10 Each/Pak].
ELECTRODES:Brass:Current:BE-620	.244 6.2mm x 12 Brass Electrode [10 Each/Pak].
ELECTRODES:Brass:Current:BE-630	.248 6.3mm x 12 Brass Electrode [10 Each/Pak].
ELECTRODES:Brass:Current:BE-640	.252 6.4mm x 12 Brass Electrode [10 Each/Pak].
ELECTRODES:Brass:Current:BE-650	.256 6.5mm x 12 Brass Electrode [10 Each/Pak].



PART NUMBER	DESCRIPTION
CURRENT EDM	
ELECTRODES:Copper:Current:CE-010	.004 .1mm x 8 Copper Electrode [20 Each/Pak].
ELECTRODES:Copper:Current:CE-012	.005 .12mm x 8 Copper Electrode [20 Each/Pak].
ELECTRODES:Copper:Current:CE-015	.006 .15mm x 8 Copper Electrode [20 Each/Pak].
ELECTRODES:Copper:Current:CE-020	.008 .20mm x 12 Copper Electrode [20 Each/Pak].
ELECTRODES:Copper:Current:CE-025	.010 .25mm x 12 Copper Electrode [20 Each/Pak].
ELECTRODES:Copper:Current:CE-030	.012 .3mm x 16 Copper Electrode [20 Each/Pak].
ELECTRODES:Copper:Current:CE-035	.014 .35mm x 16 Copper Electrode [20 Each/Pak].
ELECTRODES:Copper:Current:CE-040	.016 .4mm x 16 Copper Electrode [20 Each/Pak].
ELECTRODES:Copper:Current:CE-050	.020 .5mm x 16 Copper Electrode [20 Each/Pak].
ELECTRODES:Copper:Current:CE-060	.024 .6mm x 16 Copper Electrode [20 Each/Pak].
ELECTRODES:Copper:Current:CE-070	.028 .7mm x 16 Copper Electrode [20 Each/Pak].
ELECTRODES:Copper:Current:CE-080	.032 .8mm x 16 Copper Electrode [20 Each/Pak].
ELECTRODES:Copper:Current:CE-090	.035 .9mm x 16 Copper Electrode [20 Each/Pak].
ELECTRODES:Copper:Current:CE-100	.039 1.0mm x 16 Copper Electrode [20 Each/Pak].
ELECTRODES:Copper:Current:CE-110	.043 1.1mm x 16 Copper Electrode [20 Each/Pak].
ELECTRODES:Copper:Current:CE-120	.047 1.2mm x 16 Copper Electrode [20 Each/Pak].
ELECTRODES:Copper:Current:CE-130	.051 1.3mm x 16 Copper Electrode [20 Each/Pak].
ELECTRODES:Copper:Current:CE-140	.055 1.4mm x 16 Copper Electrode [20 Each/Pak].
ELECTRODES:Copper:Current:CE-150	.059 1.5mm x 16 Copper Electrode [20 Each/Pak].
ELECTRODES:Copper:Current:CE-160	.063 1.6mm x 16 Copper Electrode [20 Each/Pak].
ELECTRODES:Copper:Current:CE-170	.067 1.7mm x 16 Copper Electrode [20 Each/Pak].
ELECTRODES:Copper:Current:CE-180	.071 1.8mm x 16 Copper Electrode [20 Each/Pak].
ELECTRODES:Copper:Current:CE-190	.075 1.9mm x 16 Copper Electrode [20 Each/Pak].
ELECTRODES:Copper:Current:CE-200	.079 2.0mm x 16 Copper Electrode [20 Each/Pak].
ELECTRODES:Copper:Current:CE-210	.083 2.1mm x 16 Copper Electrode [20 Each/Pak].
ELECTRODES:Copper:Current:CE-220	.087 2.2mm x 16 Copper Electrode [20 Each/Pak].
ELECTRODES:Copper:Current:CE-230	.091 2.3mm x 16 Copper Electrode [20 Each/Pak].
ELECTRODES:Copper:Current:CE-240	.095 2.4mm x 16 Copper Electrode [20 Each/Pak].
ELECTRODES:Copper:Current:CE-250	.098 2.5mm x 16 Copper Electrode [20 Each/Pak].
ELECTRODES:Copper:Current:CE-260	.102 2.6mm x 16 Copper Electrode [20 Each/Pak].
ELECTRODES:Copper:Current:CE-270	.106 2.7mm x 16 Copper Electrode [20 Each/Pak].
ELECTRODES:Copper:Current:CE-280	.110 2.8mm x 16 Copper Electrode [20 Each/Pak].
ELECTRODES:Copper:Current:CE-290	.114 2.9mm x 16 Copper Electrode [20 Each/Pak].
ELECTRODES:Copper:Current:CE-300	.118 3.0mm x 12 Copper Electrode [20 Each/Pak].
TUNGSTEN ELECTRODES	
ELECTRODES:Tungsten:TE-003	Tungsten Electrode 0.03mm..[20 Each/Pak].
ELECTRODES:Tungsten:TE-005	Tungsten Electrode 0.05mm..[20 Each/Pak].
ELECTRODES:Tungsten:TE-008	Tungsten Electrode 0.08mm..[20 Each/Pak].



** Items not listed – Please contact us for a quote. **

PART NUMBER	DESCRIPTION
ELECTRODES	ECONOMY BRASS SINGLE CHANNEL
ELECTRODES:Brass:BE-015E	.006 .15mm x 8 Economy Brass Electrode ..[20 Each/Pak]..
ELECTRODES:Brass:BE-020E	.008 .20mm x 8 Economy Brass Electrode ..[20 Each/Pak]..
ELECTRODES:Brass:BE-025E	.010 .25mm x 12 Economy Brass Electrode ..[20 Each/Pak]..
ELECTRODES:Brass:BE-030E	.012 .3mm x 16 Economy Brass Electrode ..[20 Each/Pak]..
ELECTRODES:Brass:BE-030E x 12	.012 .3mm x 12 Economy Brass Electrode ..[20 Each/Pak]..
ELECTRODES:Brass:BE-035E x 12	.014 .35mm x 12 Economy Brass Electrode ..[20 Each/Pak]..
ELECTRODES:Brass:BE-040E x 12	.016 .4mm x 12 Economy Brass Electrode ..[20 Each/Pak]..
ELECTRODES:Brass:BE-040E	.016 .4mm x 16 Economy Brass Electrode ..[20 Each/Pak]..
ELECTRODES:Brass:BE-045E	.018 .45mm x 16 Economy Brass Electrode ..[20 Each/Pak]..
ELECTRODES:Brass:BE-046E	.46mm x 16 Economy Brass Electrode ..[20 Each/Pak]..
ELECTRODES:Brass:BE-050E	.020 .5mm x 16 Economy Brass Electrode ..[20 Each/Pak]..
ELECTRODES:Brass:BE-050E x 12	.020 .5mm x 12 Economy Brass Electrode ..[20 Each/Pak]..
ELECTRODES:Brass:BE-050E x 24	.020 .5mm x 24 Economy Brass Electrode ..[20 Each/Pak]..
ELECTRODES:Brass:BE-060E	.024 .6mm x 16 Economy Brass Electrode ..[20 Each/Pak]..
ELECTRODES:Brass:BE-065E	.65mm x 16 Economy Brass Electrode ..[20 Each/Pak]..
ELECTRODES:Brass:BE-070E	.028 .7mm x 16 Economy Brass Electrode ..[20 Each/Pak]..
ELECTRODES:Brass:BE-070E x 12	.028 .7mm x 12 Economy Brass Electrode ..[20 Each/Pak]..
ELECTRODES:Brass:BE-070E x 24	.028 .7mm x 24 Economy Brass Electrode ..[20 Each/Pak]..
ELECTRODES:Brass:BE-080E	.032 .8mm x 16 Economy Brass Electrode ..[20 Each/Pak]..
ELECTRODES:Brass:BE-080E x 12	.032 .8mm x 12 Economy Brass Electrode ..[20 Each/Pak]..
ELECTRODES:Brass:BE-080E x 24	.032 .8mm x 24 Economy Brass Electrode ..[20 Each/Pak]..
ELECTRODES:Brass:BE-090E	.035 .9mm x 16 Economy Brass Electrode ..[20 Each/Pak]..
ELECTRODES:Brass:BE-090E x 12	.035 .9mm x 12 Economy Brass Electrode ..[20 Each/Pak]..
ELECTRODES:Brass:BE-100E	.039 1.0mm x 16 Economy Brass Electrode ..[20 Each/Pak]..
ELECTRODES:Brass:BE-100E x 12	.039 1.0mm x 12 Economy Brass Electrode ..[20 Each/Pak]..
ELECTRODES:Brass:BE-100E x 24	.039 1.0mm x 24 Economy Brass Electrode ..[20 Each/Pak]..
ELECTRODES:Brass:BE-110E	.043 1.1mm x 16 Economy Brass Electrode ..[20 Each/Pak]..
ELECTRODES:Brass:BE-120E	.047 1.2mm x 16 Economy Brass Electrode ..[20 Each/Pak]..
ELECTRODES:Brass:BE-130E	.051 1.3mm x 16 Economy Brass Electrode ..[20 Each/Pak]..
ELECTRODES:Brass:BE-140E	.055 1.4mm x 16 Economy Brass Electrode ..[20 Each/Pak]..
ELECTRODES:Brass:BE-150E	.059 1.5mm x 16 Economy Brass Electrode ..[20 Each/Pak]..
ELECTRODES:Brass:BE-150E x 12	.059 1.5mm x 12 Economy Brass Electrode ..[20 Each/Pak]..
ELECTRODES:Brass:BE-160E	.063 1.6mm x 16 Economy Brass Electrode ..[20 Each/Pak]..
ELECTRODES:Brass:BE-170E	.067 1.7mm x 16 Economy Brass Electrode ..[20 Each/Pak]..
ELECTRODES:Brass:BE-180E	.071 1.8mm x 16 Economy Brass Electrode ..[20 Each/Pak]..
ELECTRODES:Brass:BE-190E	.075 1.9mm x 16 Economy Brass Electrode ..[20 Each/Pak]..
ELECTRODES:Brass:BE-200E	.079 2.0mm x 16 Economy Brass Electrode ..[20 Each/Pak]..
ELECTRODES:Brass:BE-210E	.083 2.1mm x 16 Economy Brass Electrode ..[20 Each/Pak]..
ELECTRODES:Brass:BE-220E	.087 2.2mm x 16 Economy Brass Electrode ..[20 Each/Pak]..
ELECTRODES:Brass:BE-230E	.091 2.3mm x 16 Economy Brass Electrode ..[20 Each/Pak]..
ELECTRODES:Brass:BE-240E	.095 2.4mm x 16 Economy Brass Electrode ..[20 Each/Pak]..
ELECTRODES:Brass:BE-250E	.098 2.5mm x 16 Economy Brass Electrode ..[20 Each/Pak]..
ELECTRODES:Brass:BE-280E	.110 2.8mm x 16 Economy Brass Electrode ..[20 Each/Pak]..
ELECTRODES:Brass:BE-300E	.118 3.0mm x 16 Economy Brass Electrode ..[20 Each/Pak]..
ELECTRODES:Brass:BE-330E	.130 3.3mm x 16 Economy Brass Electrode ..[20 Each/Pak]..

PART NUMBER	DESCRIPTION
ELECTRODES	ECONOMY COPPER
ELECTRODES:Copper:CE-015E	.006 .15mm x 8 Economy Copper Electrode ..[20 Each/Pak]..
ELECTRODES:Copper:CE-020 x 8	.008 .20mm x 8 Economy Copper Electrode..[20 Each/Pak]..
ELECTRODES:Copper:CE-020E	.008 .20mm x 12 Economy Copper Electrode ..[20 Each/Pak]..
ELECTRODES:Copper:CE-025E	.010 .25mm x 12 Economy Copper Electrode ..[20 Each/Pak]..
ELECTRODES:Copper:CE-030E	.012 .3mm x 16 Economy Copper Electrode ..[20 Each/Pak]..
ELECTRODES:Copper:CE-030E x 12	.012 .3mm x 12 Economy Copper Electrode ..[20 Each/Pak]..
ELECTRODES:Copper:CE-035E	.014 .35mm x 16 Economy Copper Electrode ..[20 Each/Pak]..
ELECTRODES:Copper:CE-035E x 12	.014 .35mm x 12 Economy Copper Electrode ..[20 Each/Pak]..
ELECTRODES:Copper:CE-040E	.016 .4mm x 16 Economy Copper Electrode ..[20 Each/Pak]..
ELECTRODES:Copper:CE-040E x 12	.016 .4mm x 12 Economy Copper Electrode ..[20 Each/Pak]..
ELECTRODES:Copper:CE-050E	.020 .5mm x 16 Economy Copper Electrode ..[20 Each/Pak]..
ELECTRODES:Copper:CE-050E x 12	.020 .5mm x 12 Economy Copper Electrode ..[20 Each/Pak]..
ELECTRODES:Copper:CE-060E	.024 .6mm x 16 Economy Copper Electrode ..[20 Each/Pak]..
ELECTRODES:Copper:CE-070E	.028 .7mm x 16 Economy Copper Electrode ..[20 Each/Pak]..
ELECTRODES:Copper:CE-070E x 12	.028 .7mm x 12 Economy Copper Electrode ..[20 Each/Pak]..
ELECTRODES:Copper:CE-080E	.032 .8mm x 16 Economy Copper Electrode ..[20 Each/Pak]..
ELECTRODES:Copper:CE-080E x 12	.032 .8mm x 12 Economy Copper Electrode ..[20 Each/Pak]..
ELECTRODES:Copper:CE-100E	.039 1.0mm x 16 Economy Copper Electrode ..[20 Each/Pak]..
ELECTRODES:Copper:CE-100E x 12	.039 1.0mm x 12 Economy Copper Electrode ..[20 Each/Pak]..
ELECTRODES:Copper:CE-120E	.047 1.2mm x 16 Economy Copper Electrode [20 Each/Pak]..
ELECTRODES:Copper:CE-150E	.059 1.5mm x 16 Economy Copper Electrode ..[20 Each/Pak]..
ELECTRODES:Copper:CE-180E	.071 1.8mm x 16 Economy Copper Electrode ..[20 Each/Pak]..
ELECTRODES:Copper:MCC050E	.020 .5mm x 12 Economy Multi-Channel Copper Electrode [20 Each/Pak]..
ELECTRODES:Copper:MCC060E	.024 .6mm x 12 Economy Multi-Channel Copper Electrode ..[20 Each/Pak]..
ELECTRODES:Copper:MCC070E	.028 .7mm x 12 Economy Multi-Channel Copper Electrode ..[20 Each/Pak]..
ELECTRODES:Copper:MCC080E	.032 .8mm x 12 Economy Multi-Channel Copper Electrode ..[20 Each/Pak]..
ELECTRODES:Copper:MCC100E	.039 1.0mm x 12 Economy Multi-Channel Copper Electrode ..[20 Each/Pak]..
ELECTRODES:Copper:MCC110E	.043 1.1mm x 12 Economy Multi-Channel Copper Electrode ..[20 Each/Pak]..
ELECTRODES:Copper:MCC120E	.047 1.2mm x 16 Economy Multi-Channel Copper Electrode ..[20 Each/Pak]..
ELECTRODES:Copper:MCC120E x 12	.047 1.2mm x 12 Economy Multi-Channel Copper Electrode ..[20 Each/Pak]..
ELECTRODES:Copper:MCC140E	.055 1.4mm x 16 Economy Multi-Channel Copper Electrode ..[20 Each/Pak]..
ELECTRODES:Copper:MCC150E	.059 1.5mm x 16 Economy Multi-Channel Copper Electrode ..[20 Each/Pak]..
ELECTRODES:Copper:MCC150E x 12	.059 1.5mm x 12 Economy Multi-Channel Copper Electrode ..[20 Each/Pak]..
ELECTRODES:Copper:MCC160E	.063 1.6mm x 16 Multi-Channel Copper Electrode..[20 Each/Pak]..
ELECTRODES:Copper:MCC170E	.067 1.7mm x 16 Economy Multi-Channel Copper Electrode ..[20 Each/Pak]..
ELECTRODES:Copper:MCC180E	.071 1.8mm x 16 Economy Multi-Channel Copper Electrode [20 Each/Pak]..
ELECTRODES:Copper:MCC190E	.075 1.9mm x 16 Economy Multi-Channel Copper Electrode [20 Each/Pak]..
ELECTRODES:Copper:MCC200E	.079 2.0mm x 16 Economy Multi-Channel Copper Electrode ..[20 Each/Pak]..
ELECTRODES:Copper:MCC200E x 12	.079 2.0mm x 12 Economy Multi-Channel Copper Electrode ..[20 Each/Pak]..
ELECTRODES:Copper:MCC220E	.087 2.2mm x 12 Economy Multi-Channel Copper Electrode ..[20 Each/Pak]..
ELECTRODES:Copper:MCC250E	.098 2.5mm x 16 Economy Multi-Channel Copper Electrode ..[20 Each/Pak]..
ELECTRODES:Copper:MCC300E	.118 3.0mm x 12 Economy Multi-Channel Copper Electrode ..[10 Each/Pak]..
ELECTRODES:Copper:MCC320E	.126 3.2mm x 16 Economy Multi-Channel Copper Electrode ..[10 Each/Pak]..
ELECTRODES:Copper:MCC330E	.130 3.3mm x 16 Economy Multi-Channel Copper Electrode ..[10 Each/Pak]..
ELECTRODES:Copper:MCC360E	.142 3.6mm x 16 Economy Multi-Channel Copper Electrode ..[10 Each/Pak]..
ELECTRODES:Copper:MCC420E	.165 4.2mm x 12 Economy Multi-Channel Copper Electrode ..[10 Each/Pak]..
ELECTRODES:Copper:MCC480E	.189 4.8mm x 16 Economy Multi-Channel Copper Electrode ..[10 Each/Pak]..
ELECTRODES:Copper:MCC500E	.197 5.0mm x 12 Economy Multi-Channel Copper Electrode ..[10 Each/Pak]..
ELECTRODES:Copper:MCC560E	221 5.6mm x 12 Economy Multi-Channel Copper Electrode ..[10 Each/Pak]..
	** Items not listed – Please contact us for a quote. **