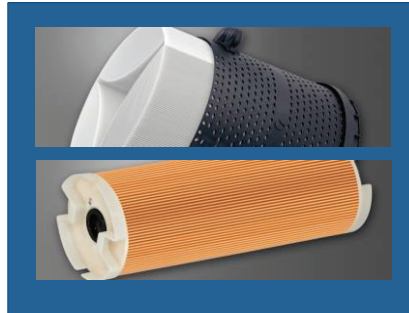


EDM Tech Center Inc.

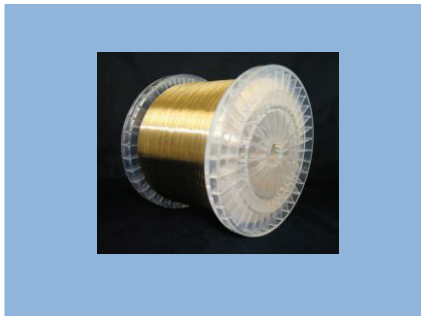
EDM Machinery and Supplies



EDM WIRE

FILTERS

REPLACEMENT PARTS



ROCKLINZER

POWER FEED CONTACTS

DIE GUIDES

BELTS

Bearings

GREASE

Machine Lighting

Sensors

DI RESIN

DIELECTRIC OIL

JOEMARS TR100 TAP REMOVER

NOZZLES

Lubrication

FLYMARKER

BRASS & COPPER ELECTRODE TUBING

TOOLING

Pinch Rollers

CLEANING AGENTS

WWW.EDMTECHCENTER.COM

763-315-9104

WWW.EDMTECHCENTER.COM

PART NUMBER	DESCRIPTION	DRAWING NO.
MITSUBISHI:6001	CX Bearing for Wire Processor..	
MITSUBISHI:61901-2RS	FX Bearing for Wire Processor..(6901VV/6901RS/61901-2RS)..	
MITSUBISHI:A084P	.008 Upper/Lower Diamond Guide..Made in Japan..	X052B054G53
MITSUBISHI:A085P	.010 Upper/Lower Diamond Guide..Made in Japan..	X052B054G54, 24.10.020
MITSUBISHI:A086P	.012 Upper/Lower Diamond Guide..Made in Japan..	X052B054G55
MITSUBISHI:A106E	.012 Upper Diamond Guide..Economy Brand..	X052B102G55, 24.10.375
MITSUBISHI:A125E	.012 Lower Diamond Guide..Economy Brand..	X052B092G56, 24.10.197
MITSUBISHI:A143P	.008 Upper Diamond Guide AF1..Made in Japan..	X052B240G52
MITSUBISHI:A144P	.010 Upper Diamond Guide AF1..Made in Japan..	X052B240G53
MITSUBISHI:A153P	.008 Lower Diamond Guide AF1..Made in Japan..	X052B241G53
MITSUBISHI:A154P	.010 Lower Diamond Guide AF1..Made in Japan..	X052B176G54, X052B241G54
MITSUBISHI:A163	Brass Inlet for CX Filters..Includes O-Ring..	S642D854P14
MITSUBISHI:A300E	Standard Indexable Carbide Upper / Lower..Economy Brand..	
MITSUBISHI:A301E	AF Lower Indexable Carbide..Economy Brand	
MITSUBISHI:A302E	AF Upper Carbide - Banana Economy Brand..	X054D345H01, X054D345H02
MITSUBISHI:A303	Indexable Carbide Holder For: F, F1, G Machines..	
MITSUBISHI:A312	O-Ring..	
MITSUBISHI:A415	Plastic Slip Nut For Flowmeter..	
MITSUBISHI:A430	O-Ring For Big Blue Pre-Filter Housing 10" (Round)..	
MITSUBISHI:A432	O-Ring for Dayton Canister..	
MITSUBISHI:A439	O-Ring For Old Style Blue Filter Canister Housing (Square)..	
MITSUBISHI:A500P	.004 Upper Diamond Guide-AF2..Made in Japan..	X053C834G51
MITSUBISHI:A501P	.006 Upper Diamond Guide-AF2..Made in Japan..	X053C834G52
MITSUBISHI:A502P	.008 Upper Diamond Guide-AF2..Made in Japan..	X053C834G53, DA76600
MITSUBISHI:A503P	.010 Upper Diamond Guide-AF2..Made in Japan..	X053C834G54
MITSUBISHI:A504P	.012 Upper Diamond Guide-AF2..Made in Japan..	X053C834G56
MITSUBISHI:A505P	.004 Lower Diamond Guide-AF2..Made in Japan..	X052B243G63
MITSUBISHI:A506P	.006 Lower Diamond Guide-AF2..Made in Japan..	X052B243G64
MITSUBISHI:A507P	.008 Lower Diamond Guide-AF2..Made in Japan..	X052B243G61, DA75800
MITSUBISHI:A508P	.010 Lower Diamond Guide-AF2..Made in Japan..	X052B243G65
MITSUBISHI:A509P	.012 Lower Diamond Guide-AF2..Made in Japan..	X052B243G62
MITSUBISHI:A516S	.003 Upper Diamond Guide..	X053C834G61
MITSUBISHI:A517S	.003 Lower Diamond Guide..	X052B243G66
MITSUBISHI:A519	O-Ring for Pre-Filter Housing..6" Round..	
MITSUBISHI:A600S	FA .008 Upper Diamond Guide..	X056C833G51
MITSUBISHI:A601S	FA .010 Upper Diamond Guide..	X056C833G52
MITSUBISHI:A602S	FA .012 Upper Diamond Guide..	X056C833G53
MITSUBISHI:A603S	FA .008 Lower Diamond Guide..	X052B387G51
MITSUBISHI:A604S	FA .010 Lower Diamond Guide..	X052B387G52
MITSUBISHI:A605S	FA .012 Lower Diamond Guide..	X052B387G53
MITSUBISHI:A621	FA .010 New Style Upper Diamond Guide..	
MITSUBISHI:A622	FA .012 New Style Upper Diamond Guide..	X056C833G56
MITSUBISHI:A624	FA .010 New Style Lower Diamond Guide..	X052B387G55
MITSUBISHI:A625	FA .012 New Style Lower Diamond Guide..	X052B387G56
MITSUBISHI:C017	6Volt 20 Amp Hour Battery ..	S280N001P01
MITSUBISHI:C346	6Volt 12 Amp Hour Battery ..	P280A066P00, DA56600
MITSUBISHI:D117600	One Way Clutch..	S811N724P12, D117600
MITSUBISHI:DA04100	Cutter Cover..	X194D503H03
MITSUBISHI:DA52200	Auxiliary Die Holder..	X054D897H01, S611
MITSUBISHI:DA64400	Solenoid Valve (AP1X) (M996)..	S642D829P14, DA64400
MITSUBISHI:DA67100	Float Switch (M719)..	X651C209G51, M719
MITSUBISHI:DA82800	Gas Door Slay..	X058D463H01
MITSUBISHI:DA89200	Support Plate (Bushing)..	X209468H01, DA89200
MITSUBISHI:DA93300	Spring for Pinch Roller..	X927D301H01
MITSUBISHI:DAC4400	AT Pinch Roller Shaft..	X261D419H01, DAC4400
MITSUBISHI:DAC4700	Spacer..	X261D669H03 DAC4700
MITSUBISHI:DAM0200	Pin..	
MITSUBISHI:DAS4700	Cylinder..	
MITSUBISHI:DAT2100	Slider head..	X055C542G52, DAT2100
MITSUBISHI:DAV4700	Wire Feed/Main Tension Roller, Ceramic..	X056C839G51, X056C851G51
MITSUBISHI:DB12000	Check Valve..	X056C415H01

PART NUMBER	DESCRIPTION	DRAWING NO.
MITSUBISHI:DB22900	Bearing..	S879N016P01
MITSUBISHI:DB79800	3-Probe Floatless Level Sensor (FA)..	X651C390G52
MITSUBISHI:DB89700	Resistor..	
MITSUBISHI:DB90200	Ball Bearing..	P840F000P50
MITSUBISHI:DB90400	Oil Seal AE1467EO..	P932F000P19
MITSUBISHI:DBC5100	Power Feeder Contact for MDPro II, BA24..	X088D493H01,DCR4600
MITSUBISHI:DBC5200	Capstan Roller	X055C663G51
MITSUBISHI:DBC5300	Pinch Roller	X055C662G51
MITSUBISHI:DBC9800	Bearing for BA, FA-S Advance Series..	P840K002P36
MITSUBISHI:DBD0800	Sensor..	
MITSUBISHI:DBJ4300	Keyboard Cover Sheet for (FA-ADV, NA2400)..	P428K001P85
MITSUBISHI:DBQ3000	Pipe End for (FA-ADV, NA2400)..	X052B539G51
MITSUBISHI:DBQ4600	Drain Box Seal Sheet (A)..	X088D403H01
MITSUBISHI:DBQ4700	Drain Box Seal Sheet (B)..	X088D404H02
MITSUBISHI:DBR4300	Upper Die Housing..	
MITSUBISHI:DC32200	Lower Roller Housing FA10, FA20, FA30M..	X181A735G51
MITSUBISHI:DC49600	Rubber Cover C..	
MITSUBISHI:DC56000	Middle Shaft..	S132
MITSUBISHI:DC82100	Wide Angle 16mm Upper Nozzle AF3..	X196C451H03
MITSUBISHI:DCC0700	Upper Head..	DQ74700
MITSUBISHI:DCY7000	AT Slider Head (FA)..	X056C857G51, X055C542G51
MITSUBISHI:DDX8400	Gas Spring FA..	X059D703H01
MITSUBISHI:DEG2300	Flat Carbide Upper/Lower for MV..	DEU4200 / X089D256H02
MITSUBISHI:DEG2400P	.004 Upper Guide, MV Series..	X052B627G66, DFW3500
MITSUBISHI:DEG2500P	.006 Upper Guide, MV Series..	X052B627G65, DFW3600
MITSUBISHI:DEG2700P	.010 Upper Guide, MV Series..	X052B662G62, DFW3800
MITSUBISHI:DEG2800P	.012 Upper Guide, MV Series..	X052B627G62, DFW3900
MITSUBISHI:DEG3200P	.004 Lower Guide, MV Series..	X052B609G66, DFW4000
MITSUBISHI:DEG3300P	.006 Lower Guide, MV Series..	X052B609G65, DFW4100
MITSUBISHI:DEG3500P	.010 Lower Guide, MV Series..	X052B663G62, DFW4300
MITSUBISHI:DEG3600P	.012 Lower Guide, MV Series..	X052B609G62, DFW4400
MITSUBISHI:DEG3900	Guide (UD)..	
MITSUBISHI:DEG4000	Guide C (UD)..	
MITSUBISHI:DEG4100	4mm Upper Nozzle for MV Series..	X085C155H01
MITSUBISHI:DEG4400	4mm Lower Nozzle for MV Series..	X085C131H01
MITSUBISHI:DEH0200	Lower Roller Bearing for MV Series..	P840K003P73
MITSUBISHI:DEH0300	Oil Seal..	P932K002P47
MITSUBISHI:DEH0400	Wave Washer..	P913K005P73
MITSUBISHI:DEH1100	Main Tension Roller for MV Series - Urethane Roller..	X089D051G51
MITSUBISHI:DEH1400	Wire Holder; Pinch Roller Retainer..	X658D366G51
MITSUBISHI:DEL9100	Wave Washer..	
MITSUBISHI:DFA1300	Pinch Roller MV4800..	X088D301H03
MITSUBISHI:DFB6500	Upper Nozzle Retaining Ring..	
MITSUBISHI:DFC1500	Lower Nozzle Support Ring..	
MITSUBISHI:DH12300	Bearing..	P840F000P71
MITSUBISHI:DH33300	Shaft for AT Feed Rollers - FA..	X264D516H02
MITSUBISHI:DH40100	Battery 12.0V 5.0Ah..	P280K000P05
MITSUBISHI:DH49900	3-Probe Floatless Level Sensor (QA)..	X651C390G54, DC43100
MITSUBISHI:DK10400	Collar 1..	X264D869H01
MITSUBISHI:DK10500	Collar 2..	X264D518H01
MITSUBISHI:DK18500	Plate..	X268D104H01
MITSUBISHI:DK18800	Air Cylinder..	P663F000P66
MITSUBISHI:DK25000	Transfer Tube / Pipe L=815..	
MITSUBISHI:DK25900	Lower Guide Holder Die Housing (D)..FA..	X187B621H01
MITSUBISHI:DK31500	Guide D For FA, RA..	X053C884G55
MITSUBISHI:DK31900	Die Guide..	X059D247H01
MITSUBISHI:DK40300	FX/FXK Take Up Pipe Spacer ..	X058D903H01
MITSUBISHI:DK60700	Gas Stay..	X059D226H03, S684D888P30
MITSUBISHI:DK62000	Carbide Power Feed Contact..	X058D459H03
MITSUBISHI:DK75100E	Pin..Economy Brand..	X268D780H01
MITSUBISHI:DK75300	Collar for FA Take-Up Pinch Roller..NOT including FA30V..	X269D032H01

PART NUMBER	DESCRIPTION	DRAWING NO.
MITSUBISHI:DK76000	Capstan Shaft FA Series..	X205C499H01
MITSUBISHI:DK91500	FX/FXK Take Up Pipe Retainer ..	X056C737G51, DM75700
MITSUBISHI:DL12500E	Ceramic Pin..Economy Brand..	X059D345H01
MITSUBISHI:DL13400	Bearing..	P840K000P13
MITSUBISHI:DL32200	Pinch Roller Shaft 2..	X264D908H04
MITSUBISHI:DL34200	Aspirator Nozzle for FA - Ceramic..	
MITSUBISHI:DN19000	Ball Bearing..	P840K001P74
MITSUBISHI:DN24300	Guide Shoot for FA..	X059D446H01
MITSUBISHI:DN25200E	FA Felt Wiper..	X059D050H03
MITSUBISHI:DN26400	Roller Unit..	X269D013G51
MITSUBISHI:DN35200	AT Pinch Roller for FA Roller Unit..	X269D013G52
MITSUBISHI:DN569A	Wire Feed/Main Tension Roller, Ceramic..	X056C839G51, X056C851G51
MITSUBISHI:DN79500	Fuse 20 Amp..	DH24000, DEA9800
MITSUBISHI:DN9800	Fan..	
MITSUBISHI:DP61200E	Collar for AT Roller Economy Brand..	X268D905H01
MITSUBISHI:DQ22700	Filter for Chiller Intake FA New Style ..for Chiller Model HE-SV50-W1..	DOB6400
MITSUBISHI:DQ43700	Pulley..	X059D479H01
MITSUBISHI:DQ74500	AT Power Feeder Hook..	X268D042G51
MITSUBISHI:DS08600	Fan..	
MITSUBISHI:DT02800	Acrylic Pipe..	X088D073H01
MITSUBISHI:DT03000	Guide Pipe..	X059D791G54
MITSUBISHI:DU95000	AT Roller w/o Bearing..	X261D421H01
MITSUBISHI:DU95300	Shaft With Roller..	X261D600H01
MITSUBISHI:DU95400	Pinch Roller..	X261D601H01
MITSUBISHI:E135AE	Battery Sealed Lead-Acid Economy Brand..	
MITSUBISHI:F016	O-Ring..	S932N110P08
MITSUBISHI:F017	O-Ring..	S932N110P12 DA97700
MITSUBISHI:FA Pendant Box	Non-Option Standard Pendant Box..	
MITSUBISHI:M004	Ceramic Actuator Lever Guard Tube..	X054D027H02,DA36800
MITSUBISHI:M048	Bearing for Lower Roller Assembly..	S859N215P01
MITSUBISHI:M049E	Bearing Economy Brand..	S859N315P03
MITSUBISHI:M067PE	Standard Carbide Power Feeder Upper/Lower; Polished..Economy Brand..	X054D125H03
MITSUBISHI:M1047	Retaining Ring C-Type 35..	S922N110P35, DB56800
MITSUBISHI:M1048A	Connector Type C4N8x6-PT1/8..	
MITSUBISHI:M1065	M3x10 Socket Head Cap Screw..	
MITSUBISHI:M1080	M3x6 Phillips Flat Head Screw..	
MITSUBISHI:M1094	Capstan Roller AF2..	X053C778G51
MITSUBISHI:M1096	Pinch Roller AF2..	X053C779G51
MITSUBISHI:M1123E	Bearing Economy Brand..	S859N219P80 DA69300
MITSUBISHI:M1137	M4x8 Phillips Flat Head Screw..	
MITSUBISHI:M1138	Check Valve..	S931N060P01
MITSUBISHI:M1145	M5x20 Set Screw ..	
MITSUBISHI:M1149E	Micro Switch..Economy Brand..	S420N608P18 (DA635A000)
MITSUBISHI:M1172	Oil Seal 15mm ; For 15mm Shaft..AE-0382-AO..	
MITSUBISHI:M1173	Pinch Roller Motor 41K25RGN-A..Motor w/ Spiral Gear..	S601D899P21,DK76200,DA49500
MITSUBISHI:M1174	Gear Box 4GN18K for p/h M1173..	
MITSUBISHI:M1187	M3x6 Set Screw..	
MITSUBISHI:M1190BE	Resin Pump Economy Brand..	S641D841P07-A
MITSUBISHI:M1201	SMC Mist Separator Unit Assembly..	X986A807H01
MITSUBISHI:M1239	Rubber Stopper for Wire Break Actuator Tube..	X174D527H01, DA29300
MITSUBISHI:M1276	Vinyl Cover Upper Head AF2..	X179D943H02
MITSUBISHI:M1295	Retaining Ring 15mm..	
MITSUBISHI:M1296	12mm Retaining Ring..	
MITSUBISHI:M1315-LG	Solenoid (Large)..	
MITSUBISHI:M1315-SM	Solenoid (Small)..	
MITSUBISHI:M1316	M3x10 Flat Head Phillips Screw..965-A4..	
MITSUBISHI:M1341	Motor Brush for (MA092) ..Sold Individually ..	
MITSUBISHI:M1353	Bearing..	S859N219P33,DA69100,24.50.211
MITSUBISHI:M1354	Bearing..	S859N219P06, DA69000
MITSUBISHI:M1356	M2x10 Tension Pin for AF1/AF2 + AF2/AF3 Holder..	S921N311P10, DB68700
MITSUBISHI:M1375	Air Cylinder..	P663F000P22 DB24500

PART NUMBER	DESCRIPTION	DRAWING NO.
MITSUBISHI:M1404	O-Ring..	S932N421P06, DA53100
MITSUBISHI:M1406E	AF2/AF3 Flush Cup Stopper Economy Brand..	X208D528H02 DC08900
MITSUBISHI:M1436	CKD Solenoid Valve..	
MITSUBISHI:M1445E	CX Capstan Roller..Economy Brand..	X058D077G51
MITSUBISHI:M1446E	CX Pinch Roller..Economy Brand..	X058D078G51
MITSUBISHI:M1447	Bearing..	
MITSUBISHI:M144E	Wire Cleaner Felt Pad..	X174D199H02, 24.50.600
MITSUBISHI:M1460	5mm Retaining Ring..	
MITSUBISHI:M147	Actuator Lever Arm..	
MITSUBISHI:M1478	Gas Door Stay..	S648N711P16, DA68500
MITSUBISHI:M1483	CX Series; Mitsubishi Wire Chopper w/Replacable Blades.. CORE EXCHANGE NEEDED..	
MITSUBISHI:M1483 #6	Shaft for CX..	
MITSUBISHI:M1494	Constant Flow Valve..	S642D842P09
MITSUBISHI:M1501C	Black Cap for Coupler on CX Wire Processor Ver1..	X058D139H01
MITSUBISHI:M1504	CX, FX Oil Seal..	S932N047P03, DA72600
MITSUBISHI:M1513	Tokico Gas Stay Y2281 LL3 (Black)..CX, FX Work Tank Door Stay..	S684D816P08.DM70100.DA67700
MITSUBISHI:M1517E	Angular Bearing Economy Brand..	P840F000P25
MITSUBISHI:M1534E	FX1, FX10, QA10, RA90 Lower Ceramic Plate..Economy Brand..	X056C273G51
MITSUBISHI:M1535	CX Version 2, FX, FX-K, FA (Red) Style Wire Processor w/ Replacable Blades..	
MITSUBISHI:M1535-FBH	Fixed Holder w/Insert + Screw..(Set Includes Item No's 10, 11, 12)..	
MITSUBISHI:M1535-RB	Replacement Blades - 5 Piece Set..(Set Includes Item No's 5, 12)..	
MITSUBISHI:M1535 #2	Ball Bearing Set..	
MITSUBISHI:M1535 #4	O-Ring..	
MITSUBISHI:M1535 #6	FX/FA/RA Shaft..	
MITSUBISHI:M1535 #8	Bearing Spacer..	
MITSUBISHI:M1535S	CX Version 2, FX, FX-K, FA OEM (Aluminum) Style Wire Processor..	X056C326G51, DJ74700
MITSUBISHI:M1536	FX Capstan Roller..	X058D339G51, DD54100
MITSUBISHI:M1537	FX Pinch Roller..	X058D340G51, DD54100
MITSUBISHI:M1561	FX Upper Head Vinyl Cover (Round)..For Submerged Machines..	
MITSUBISHI:M1566	FX Upper Head Vinyl Cover (Round)..For Non-Submerged..	X179D943H05, DC530A000
MITSUBISHI:M1569	Ceramic Pipe End Nozzle..	X254D700G51
MITSUBISHI:M1573	MPC-5 Grease 18ml Container..Z Axis Grease..	
MITSUBISHI:M1574E	Cover for FX Wire Take-Up..	X196C271G51 DA86300
MITSUBISHI:M1575E	FX20, FX30, QA20 Lower Ceramic Plate..For FX & FX-K Series..Economy Brand..	X056C356G51, 24.50.106
MITSUBISHI:M1576E	FX20 AF Encoder Pulley Wire Drive Pulley..Economy Brand..	X058D429H01
MITSUBISHI:M1577E	Fixed Blade for FX Processor..Economy Brand..	X058D376H01
MITSUBISHI:M1579E	Main Tension Roller For CX/FX (Rubber Roller) ..Economy Brand..	X193C196G51, DA85600
MITSUBISHI:M1581	Holder for Take up Pipe..	DB81700
MITSUBISHI:M1587E	FX Processor Aspirator Nozzle - Plastic..Economy Brand..	X203C145H04
MITSUBISHI:M1595E	Transfer Pipe End (Plastic)..Economy Brand..	X258D320G51.DB15400.24.50.048
MITSUBISHI:M1613	Wire Processor Housing For FX/CX..Economy Aftermarket Brand..	X196C270G53 (DC49200)
MITSUBISHI:M1615E	Detector for Processor Aspirator Nozzle M1587/M1970/DL34200..Economy Brand..	X258D350H01, DA91500
MITSUBISHI:M1618	SMC Cylinder..	
MITSUBISHI:M1624	FX20, FX20K, QA20 Packing A Ring..	X058D380H05, DA99900, DED0200
MITSUBISHI:M1632	FX10 Lower Power Feed Cable..Including Ground Cables..	
MITSUBISHI:M1636	CX20, SX10, SX20 Lower Power Feed Cable..Including Ground Cables..	
MITSUBISHI:M1643	Processor Motor Housing FX/CX Version 2 Processors..	X182B987G52, DD47800
MITSUBISHI:M1645E	FX Nozzle Adaptor Mounting Brass for Nozzle Adaptor..	X182B957H01
MITSUBISHI:M1678	Gas Door Stay..	X058D463H01, DB01100
MITSUBISHI:M1684E	3-Probe Floatless Level Sensor (FX10/20)..	X651C390G51
MITSUBISHI:M1685	8 x 6 Hose Coupling Fitting..	S648N419P47
MITSUBISHI:M1686	Filter for Chiller Intake FX,FA ..Chiller HE-UV3-04 (UV3-03A)..	X056C540G51
MITSUBISHI:M1693	U/V Ways For FX10, FX10K, FX20, FX20K, RA90..VR4-200HX22Z..	X075D400H01
MITSUBISHI:M1712	SX10, FX10, FX10K, QA10 Packing B One Piece..	X058D685H01, DB15500
MITSUBISHI:M1713	FX20, FX20K, QA20 Packing B One Piece..	X058D685H02 DB15600
MITSUBISHI:M172	BB 15mm Nut AN02..HWM-0511..	S891N002P10
MITSUBISHI:M173	BB 15mm Washer AW02 (Ball Screw)..	S892N021P00
MITSUBISHI:M1744	Filter for SMC Regulator..	X056C137G51, DB11800
MITSUBISHI:M1766	FX/FX-K Lower Roller Housing..	X181A449G51, DA84400
MITSUBISHI:M1772	FX Wire Processor Coupler Version 5 ..	X258D168G54.DA94000.DDV7500
MITSUBISHI:M1775	Filter for SMC Regulator..	

PART NUMBER	DESCRIPTION	DRAWING NO.
MITSUBISHI:M1848	Collar B For FX/FA Lower Ceramic Roller..	X264D237H01, DC11800,24.50.215
MITSUBISHI:M1849	Collar A For FX Lower Ceramic Roller..	X264D236H01, DC23900
MITSUBISHI:M1850	FX Shaft for Lower Roller Housing..DC28800..	X203C634H01, DC28800
MITSUBISHI:M1861	Set Screw M4x6..Flat Point..	S901N329P11 DC67300
MITSUBISHI:M1884	Set Screw M4x8 ..Flat Point..	S901N329P12
MITSUBISHI:M189	Bearing..	S862N013P10
MITSUBISHI:M1901	Magnet Valve..	S642D829P54, DA64600
MITSUBISHI:M1904	Bearing D=mm..	P840F000P69 DB79000
MITSUBISHI:M1910	Solenoid Valve..	S642D829P58, DA64700
MITSUBISHI:M1912	Wire Processor Motor..M71A15S4DU FX/FXK 1PH 100V AC 15W..	X649C225G51,DFM4400,D613000
MITSUBISHI:M1912E	Wire Processor Motor M71X15S4LG..	X055C012H01 DK837A000
MITSUBISHI:M1938E	Pinch Roller (Rubber Pulley)..Economy Brand..	X058D912G51 DH06500 DAM3000
MITSUBISHI:M1947E	Ceramic Roller for FX Lower Roller Bearing M1904..Economy Brand..	X203C607H03,DH06200,24.10.812
MITSUBISHI:M1948E	FX Transfer Nozzle -Ceramic..Economy Brand..	X258D321G53
MITSUBISHI:M1955	FXK/QA Upper Flush Cup Adapter..	X187B370H03
MITSUBISHI:M1970	FX Processor Aspirator Nozzle (Ceramic)..	X203C145H05,X056C845H04
MITSUBISHI:M1973	Lower Roller Housing..FX, FX-K, RA90AT..	X181A449G52, X181A788G51
MITSUBISHI:M2001	Air Cylinder CM2B25-50AJ-XC6 (SMC)..	X058D017G51
MITSUBISHI:M2002	Air Cylinder CQ2A25-40D (SMC)..	P663F000P23
MITSUBISHI:M2028E	Tension Roller for FX, FX-K..Economy Brand..	X056C662H01, DB13500
MITSUBISHI:M2038	FA Pipe End..	X056C967G51,DK76500,DP53200
MITSUBISHI:M2039	FA Pipe End Nozzle..	X059D299G51,DK76700
MITSUBISHI:M2040	FA10/FA20 Pinch Roller..	X055C008G51, DK33900
MITSUBISHI:M2041	FA10/FA20 Capstan Roller..	X055C009G51 DK33800
MITSUBISHI:M2045	Felt Wiper..	
MITSUBISHI:M214E	Flow Meter Economy Brand..	S801D824P01, 24.50.500
MITSUBISHI:M214E/N	Flow Meter - No Knob..Economy Brand..	S801D824P09, DT51900
MITSUBISHI:M221	O-Ring..	S932N420P15, 24.10.600
MITSUBISHI:M2212	Bearing 6204LLU CM/5K..	
MITSUBISHI:M222	O-Ring..	S932N420P23
MITSUBISHI:M257A	Main Tension Brake..	S810D811P02
MITSUBISHI:M259E	Upper Ceramic Plate H, G, H', H1, HA, C, F1 Machines..Economy Brand..	X053C162H01, 24.50.104
MITSUBISHI:M260E	Lower Ceramic Plate..F STD, F1 STD, G, H Machines..Economy Brand..	X054D185G51
MITSUBISHI:M277E	U/V Ways Cross Roller Guide..	S889D825P05
MITSUBISHI:M297E	Bearing Economy Brand..	S859N319P08, 24.50.202
MITSUBISHI:M375E	Front Fixing Plate for Felt Pad..Economy Brand..	X178D933H02
MITSUBISHI:M377E	Plastic Rear Plate for Felt Pad..Economy Brand..	X178D933H03
MITSUBISHI:M514E	Vinyl Cover Upper Head (Square)..	X184D784H02
MITSUBISHI:M531	Set Screw..	X053C241G52, 24.50.040
MITSUBISHI:M550E	4.5mm Upper Plastic Flush Cup..Economy Brand..	X183C439H01
MITSUBISHI:M550SET	4mm Extended Upper Flush Cup Set - Plastic..	
MITSUBISHI:M579E	Standard Carbide Holder ..Economy Brand..	X053C245H02
MITSUBISHI:M626	8mm Lower Ceramic Flush Cup..	X053C491H03
MITSUBISHI:M626P	8mm Lower Flush Cup - Plastic..	X053C491H03
MITSUBISHI:M639E	Capstan Roller..Economy Brand..	X054D413G53
MITSUBISHI:M640E	Pinch Roller..Economy Brand..	X054D413G51
MITSUBISHI:M680	Bearing D=7mm..	S859N319P33, 24.50.200
MITSUBISHI:M689E	Lower Roller Economy Brand..	X183C442H01
MITSUBISHI:M692	Wave Washer..	S913N313P11,24.50.204
MITSUBISHI:M694E	Lower Head Rectifier Ring..Economy Brand..	X194D998H02
MITSUBISHI:M712E	Magnet Pump & Motor ..	
MITSUBISHI:M719	Float Switch..	DA67100
MITSUBISHI:M726P	4mm Lower Flush Cup, Flat Black-Plastic..	
MITSUBISHI:M726PE	4mm Lower Brass/Plastic Flush Cup..Grooved Brass-Clear Plastic Economy Brand..	X053C491H01
MITSUBISHI:M729E	8mm Upper Plastic Flush Cup..Economy Brand..	X183C439H03
MITSUBISHI:M744	Bearing D=8mm..	S859N319P31,DA19700,24.50.201
MITSUBISHI:M759E	Lower Ceramic Plate C, H1, HA..Economy Brand..	X053C314H02, 24.50.100
MITSUBISHI:M775	Juracon Catch Male/Female..	S929N432P01 DA71700
MITSUBISHI:M790	Elbow Connector (Includes Nut & Sleeve)..	S684N412P14 DA03800
MITSUBISHI:M808AE	One-Way Clutch Economy Brand..	S811N924P02
MITSUBISHI:M822E	Cable for Wire Alignment..Economy Brand..	X641D408G51

PART NUMBER	DESCRIPTION	DRAWING NO.
MITSUBISHI:M824	Cap Screw..	
MITSUBISHI:M840	Plastic Sleeve 8mm for Synflex hose..	
MITSUBISHI:M844E	Limit Switch w/Actuator Lever..Economy Brand..	P421A030P00
MITSUBISHI:M854E	Bearing 15mm Economy Brand..	S862N023P10
MITSUBISHI:M856	M6x25 Phillips Plastic Screw ..	
MITSUBISHI:M871E	SX, CX Lower Ceramic Plate..Economy Brand..	X056C110G51, 24.50.110
MITSUBISHI:M963	E-Type Bushing..	
MITSUBISHI:M973	Diamond Tube..	X649A211G51N, DP53000
MITSUBISHI:M983	Seal Washer W4..	
MITSUBISHI:M996	CKD Solenoid Valve GAP1X-4038 (AP1X 7805)..	S642D829P14, DA64400
MITSUBISHI:M999E	Bearing Economy Brand..	S859N313P01, DC860A000
MITSUBISHI:MA003	Vinyl Cover..	X199D297H02
MITSUBISHI:MA008	Oil Seal W6..	
MITSUBISHI:MA036E	Wire Alignment Device..6-Pin..Economy Brand..	S684D844P68A
MITSUBISHI:MA040	Upper Isolation Spacer..	X054D308H03 DA52500
MITSUBISHI:MA041	Upper Isolation Bushing..	X054D747H01
MITSUBISHI:MA049	Alignment Gauge Cable w/ Connectors..	X641C721G52 DA07000
MITSUBISHI:MA060E	Brass Coupler..	
MITSUBISHI:MA068	Pre-Tension Motor 3W 100/60V TM-H6A3PB1NR076 6RHD9..	S601D899P08, DA63800
MITSUBISHI:MA089E	Ceramic Washer Economy Brand..	X054D309H01, DD173A000
MITSUBISHI:MA092	DC Motor with Gear Head TS3462N1E76..Tamagawa..	S601D813P14, DB24100
MITSUBISHI:MA110E	Pulley For Wire Guide w/ M049 Bearing..Economy Brand..	X054D121H02
MITSUBISHI:MA151	FX Gray Liquid Gasket Sealer..250 Gram Tube..	
MITSUBISHI:MA308	Packing A Ring..SX10, FX10, FX10K, QA10, FA10, FA10-V..	X058D380H01, DA94200
MITSUBISHI:MA329	Packing B for CX20/SX20 Version 3..One Piece..	X058D685H04, DD07000
MITSUBISHI:N252	Door Gasket; Door Seal for Machines ; sold per meter..	S641D899P87, DC86700
MITSUBISHI:P081	10 Amp Fuse PL4100..	S403N202P12
MITSUBISHI:P289	0.3 Amp Fuse..	
MITSUBISHI:P295	Fuse A70P15-1..Fuse F70C-15 15 Amp..	P460A221P00
MITSUBISHI:RA90 Brackets	Brackets (3 Pc Set) for Z-Axis Readout on RA90..	
MITSUBISHI:RA90 Vertical Scale	Vertical Scale for Z-Axis Readout on RA90..	
MITSUBISHI:S006E	Carbide Power Feed (UP) Type A..F, G, H, with SK..Economy Brand..	X054D199H01
MITSUBISHI:S014E	Belt 15-FL-1600 ; Belt 15-FL-1608..DWC 110F,F1,G,H..Economy Brand..	S817N013P02
MITSUBISHI:S032E	Set Screw..Economy Brand..	X179D406H04, DC610A003
MITSUBISHI:S088PE	Non-Indexable Carbide-Lower..Economy Brand..	X054D129H04
MITSUBISHI:S095E	Carbide Power Feed (UP) Type B..F, G, H, with SK..Economy Brand..	X054D216H01
MITSUBISHI:S099	Limit Switch..	P421F000P33
MITSUBISHI:S100E	Tension Roller for F, G, H, HA..Economy Brand..	X053C175G51
MITSUBISHI:S115E	Lower Ceramic Plate..F SK, F1 SK, G SK, H SK Machines..Economy Brand..	X053C228G52
MITSUBISHI:S134E	Bearing for Drive Pulleys S024 & S026..Economy Brand..	S859N219P37
MITSUBISHI:S137E	One Way Clutch..Economy Brand..	S811N724P01, 24.50.203
MITSUBISHI:S207	SK Guide Bushing - Left..	X176C544H02
MITSUBISHI:S215	Upper Ceramic Plate..Isolation Plate SK Upper Head..	X188D386H01
MITSUBISHI:S230E	6mm Lower Brass/Plastic Flush Cup..Economy Brand..	X053C491H02
MITSUBISHI:S240E	Eccentric Center Dies Guide..Economy Brand..	X053C299G51, 24.50.010
MITSUBISHI:S244E	SK Quill (Upper) 14" For .008, .010, .012 Wire..Economy Brand..	X053C376G51
MITSUBISHI:S314-1	DC Motor..	S601D899P01-A, 24.50.502
MITSUBISHI:S315E	Set Screw (Upper) 0.4mm..Economy Brand..	X053C524G51
MITSUBISHI:S318	AF1 Lower Sensor Assembly..	X053C449G51
MITSUBISHI:S319	Bearing..	S859N219P39
MITSUBISHI:S320E	Bearing Economy Brand..	S859N219P38
MITSUBISHI:S321	Bearing..	S860N009P02
MITSUBISHI:S323	O-Ring..	
MITSUBISHI:S325	O-Ring..	S932N110P02
MITSUBISHI:S332	Bearing..	S859N219P40, DA20100
MITSUBISHI:S333	Bearing..	
MITSUBISHI:S340	4mm Upper Flush Cup AF1..	
MITSUBISHI:S355	Spring..	
MITSUBISHI:S358E	Bearing Economy Brand..	S859N315P01
MITSUBISHI:S400	AF Capstan Roller..	X053C522G52,DA54300, 24.10.808
MITSUBISHI:S409	Pinch Roller w/ Gear..	X053C522G51,DA16800, 24.10.807

PART NUMBER	DESCRIPTION	DRAWING NO.
MITSUBISHI	MITSUBISHI	DRAWING NO.
MITSUBISHI:S410	AF Capstan Roller..	X053C523G51
MITSUBISHI:S415E	4mm Lower Ceramic Flush Cup..Economy Brand..	X053C621H01
MITSUBISHI:S416E	8mm Lower Ceramic Flush Cup..Economy Brand..	X053C525H03
MITSUBISHI:S421E	Retaining Ring..Economy Brand..	S922N040P07
MITSUBISHI:S454	AF Cutter Bushing..	S833N315P50, DA17800
MITSUBISHI:S457E	Plate Spring for AF2 Carbide Door Economy Brand..	X054D943H01
MITSUBISHI:S482	AF Cutter Motor Cover (Black) For QA/FXK..	X058D715H01, DB15900
MITSUBISHI:S603E	1.0mm AF2/AF3 Jet Nozzle..Economy Brand..	X054D826H04, X054D826H08
MITSUBISHI:S606E	4mm Lower Ceramic Flush Cup AF2/AF3..Economy Brand..	X054D881H03, DQ30300
MITSUBISHI:S606PE	4mm Lower Brass/Plastic Flush Cup AF2/AF3..Economy Brand..	
MITSUBISHI:S620E	4mm Upper Plastic Flush Cup..Economy Brand..	X186C793H01, DQ44200
MITSUBISHI:S620EXT	4mm Upper Extended Flush Cup..	
MITSUBISHI:S621E	8mm Upper Plastic Flush Cup..Economy Brand..	
MITSUBISHI:S624	O-Ring..	S932N420P20 DA72900
MITSUBISHI:S625	O-Ring..	S932N421P35,24.10.604,DB69200
MITSUBISHI:S626	O-Ring..	S932N421P21 DA73000
MITSUBISHI:S630E	AF2 Wire Sensor; Wire Detector Economy Brand..	X053C829G54, X053C920G53
MITSUBISHI:S632E	Polished 48 Position Carbide for AF2/AF3..Economy Brand..	X056C075H04
MITSUBISHI:S632UPE	Un-Polished 48 Position Carbide for AF2/AF3..Economy Brand..	X056C432H01, X053C934H01
MITSUBISHI:S633E	8mm Lower Ceramic Flush Cup AF2/AF3..Economy Brand..	X054D881H02, DQ30400
MITSUBISHI:S633PE	8mm Lower Brass/Plastic Flush Cup AF2/AF3..Economy Brand..	
MITSUBISHI:S637E	Upper Nozzle Adapter AF2/AF3..Economy Brand..	X182B458H02
MITSUBISHI:S640	Quill A with Holder for AF2..	X054D980G51, DB85000
MITSUBISHI:S650E	Wire Contact Detector..Power Feeder Fixture..SX Wire Contact Detector..Economy Brand..	X209D049H01
MITSUBISHI:S652	Power Feeder For Contact & Cutter Assemblies..	X054D990H01, DA78100
MITSUBISHI:S655E	Lower Power Feed Holder AF2 w/7.5 Deg. Index Pin Economy Brand..	X209D212H01, DA88600
MITSUBISHI:S665E	AF3 Wire Collection Box..Economy Brand..	X056C147G51, X056C539G51
MITSUBISHI:S666	AF3 Guide Pipe Assembly..	X254D913G51 DA54900
MITSUBISHI:S675	Die Guide B - AF2 Ceramic Style Die Guide..	X056C072H01, DA53500
MITSUBISHI:S683E	AF2/AF3 Lower Door Packing Economy Brand..	X208D555H01
MITSUBISHI:S686	1.5mm Jet Nozzle (Standard) AF2/AF3..	X058D054H02, DA80100
MITSUBISHI:S689E	4mm Upper Plastic Flush Cup for FX AF3..Economy Brand..	X196C197H01, X196C451H01
MITSUBISHI:S689EXT	4mm Extended Tip Upper Plastic Flush Cup for FX AF3..	
MITSUBISHI:S690E	8mm Upper Plastic Flush Cup for FX AF3..Economy Brand..	X196C197H02, X196C451H02
MITSUBISHI:S691	O-Ring..	S932N421P42
MITSUBISHI:S692	O-Ring..	
MITSUBISHI:S702	AF3A Lower Guide Holder..Lower Die Housing QA, FX AF3/AT..	X182B995H01 DC39400
MITSUBISHI:S703	FX Upper Head..	X182B893H01
MITSUBISHI:S704	Door for FX Upper Head..	
MITSUBISHI:S705	Door for AF3A Lower Head..w/ Door Packing S683..	X186C819H02
MITSUBISHI:S706	Pin for FX Upper Head..	
MITSUBISHI:S810	Upper Roller..	X058D991G52, DH87100
MITSUBISHI:S811	Upper Pinch Roller..	X058D991G51, DH88300
MITSUBISHI:S820	Pin for AT Wire Retrieval Guide..	DK13900 S921N150P16
MITSUBISHI:W175	Brass Coupler..	S648N712P01
MITSUBISHI:W344E	Bearing Economy Brand..	S862N033P70, DA69500
MITSUBISHI:X058	Surge Killers NSKG..	
MITSUBISHI:X104B	Battery 3.6V..	MBM6800

** Items not listed – Please contact us for a quote. **

